
PARC  ESTA

REFINED LIVING IN THE EAST



BE BOLD.
LIVE MORE.

Your new life begins at Parc Esta, at the doorstep of Eunos MRT station, a pivotal position amidst the emerging Regional Centre in the East.

With nine 18-storey towers of one to five-bedroom homes, Parc Esta rises majestically above the streetscape on a nearly 3.5-hectare estate. Discover premium residences with refined touches, sumptuous realms with exciting facilities in a more than 200-metre-long garden and waterscape, and a myriad of nearby amenities that highlight its unrivalled location.

1

BEDAZZLE

Designed to turn heads, Parc Esta is elegance and grandeur articulated from the moment you arrive.

2

BECOME

Live your dreams amidst luxurious indulgences, tranquil havens and a spectacular oasis.

3

BELONG

Be among the new East-urbanites in a charming district of exciting rejuvenation.

4

BEHOLD

Discover a variety of layouts that will enrich your personal sense of space.

5

BEYOND

Every detail delivers smart, modern living. A richer experience awaits you.



BEDAZZLE

1



**AN ARCHITECTURAL
FASCINATION**

Perched on a sweeping estate, Parc Esta is the new residential landmark in the East. Designed for sophisticated urban living, the towers are spaced generously apart from one another to give residents a heightened sense of privacy and seclusion. Featuring stunning full-height glass façades, this architectural fascination frames the setting for 1,399 luxurious homes in a modern sanctuary of refined living.

BEDAZZLE

BECOME

BELONG

BEHOLD

BEYOND



Artist's Impression

Lantern Isle

Elegance and grandeur are words that will fill your thoughts once you have fully experienced Parc Esta – from the moment you arrive until its full brilliance is revealed.

In this modernist architectural home, the 18-storey towers are each crowned with a striking lantern-inspired feature. Come nightfall, they light up and transform into shimmering jewels, adding a unique character to the skyline.

BECOME



2

BEDAZZLE

BECOME

BELONG

BEHOLD

BEYOND

GRAND PARC



Artist's impression

Signature Arrival Court

Enter an exquisite residence that reflects the grandeur of luxury hotels.

Be welcomed by the soothing ambience of calm waters lined with bespoke lights at the Lantern Isle. Drive up to a grand foyer and be greeted by a stately arrival hall where luscious openness and elegance flow throughout the expansive Signature Arrival Court.

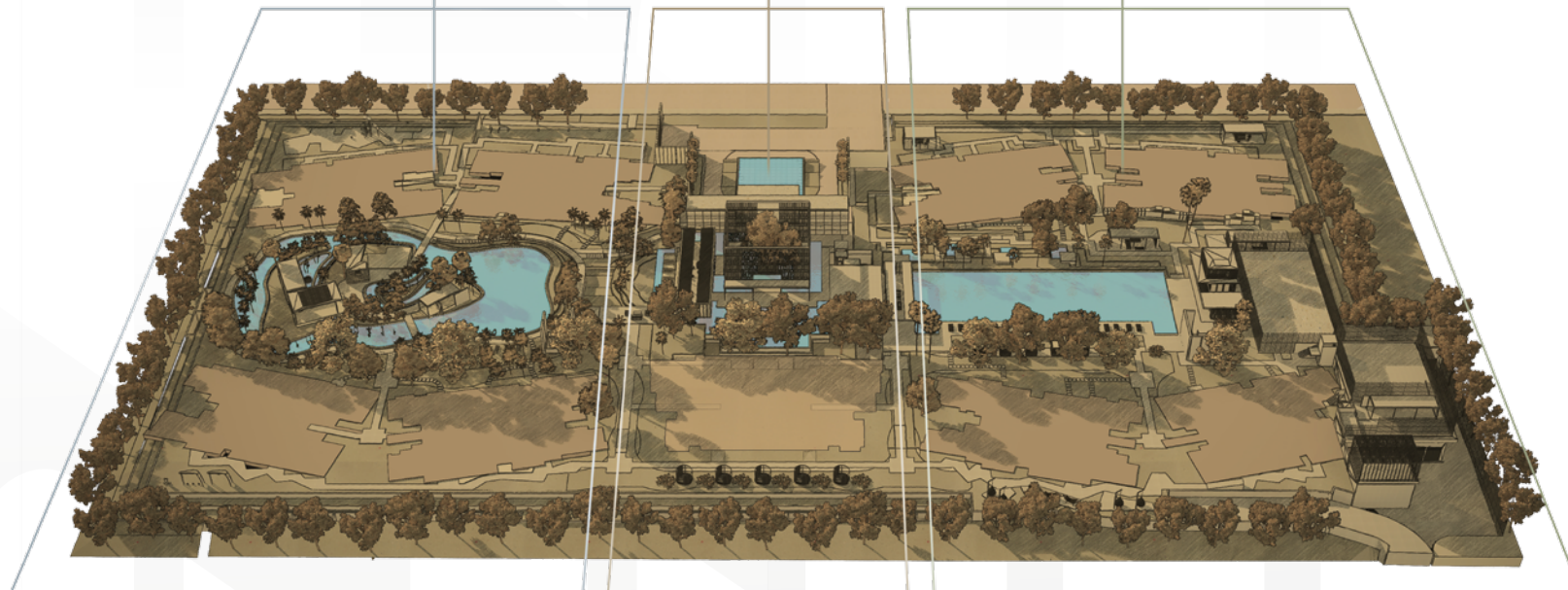
As you ascend the elegant stone steps, be held captive by the serenity of a picturesque atrium and let the enjoyment of coming home to an unforgettable dwelling linger.



LIVE FULLY AT
WEST PARC

LIVE ESTEEMED AT
GRAND PARC

LIVE INSPIRED AT
EAST PARC



DISCOVER BRILLIANT WAYS TO LIVE YOUR DREAMS

Nearly three-quarters of Parc Esta's sprawling estate is dedicated to bringing together three sumptuous realms in one idyllic residence. Each one is full of distinct character to create interconnected worlds that deliver transformative experiences.

Everyone will find an immersive space to indulge in.



Artist's Impression

Sunken Party Lounge

At the heart of Grand Parc is the Majestic Tree Atrium, which lends a picturesque setting to the enchanting Reflective Pond close by, cradling the Sunken Party Lounge.



Koi Pond

Elegantly covered walkways choreograph the seamless discovery of more decadent surprises. Your yearning for quietude will draw you to the exquisite Atrium Lounge and Garden Lounge, which overlook the tranquil Koi Pond and its cosy Koi Pond Lounge.

An architectural wonder that is as splendid as it is indulging.

Welcome to Parc Esta's architectural centerpiece, offering an idyllic vantage point to gaze at the full splendour of your home's central realm.



Artist's Impression

Majestic Tree Atrium

BEDAZZLE

BECOME

BELONG

BEHOLD

BEYOND

EAST PARC



Escape to a haven
echoing the delights
of far-flung retreats.

Here's an exclusive tropical oasis just steps from your front door. You'll sense it in the openness and quietude, the rhythmic rustling of green leaves, the charm of rustic woodworks, the calming turquoise waters of the 50-metre pool, and the inviting poolside dotted with pampering cabanas, chill-out lounges and so much more.

BEDAZZLE

BECOME

BELONG

BEHOLD

BEYOND

Relax, play and socialise
in a sea of lushness.



Artist's Impression

Parc Clubhouse



Luxe Cabana



Artist's Impression

Jacuzzi Pool

ENTERTAIN WITH GREAT FINESSE

Blending relaxation and luxury is Parc Clubhouse, the social heart of Parc Esta. Celebrate the best things in life in a cosy function room or at the magnificent Poolside Dining Verandah while enjoying breathtaking pool views.

UNWIND AT YOUR OWN LANGUID PACE

Immerse yourself in one of the Jacuzzi Pools and melt your cares away. Then cosy up to one of the Luxe Cabanas or stretch out on a Sun Bed. Before heading home, wander off to the Foot Reflexology Pavilion for a bonus treat.



Foot Reflexology Pavilion

BEDAZZLE

BECOME

BELONG

BEHOLD

BEYOND

A free-spirited Eden with a rich variety of atmospheric terrains.

What makes this landmark residence a real pleasure to own is that it caters perfectly to the demands of your busy, modern lifestyle. Everything you need is right outside of your door, within minutes of you waking up or returning home.



Yoga Pavilion



Paws Playground



Hammock Park



Grill & Dine Pavilion

MAKE NEW RECIPES FOR FUN

One moment you're satiating your craving for a cookout at the Grill & Dine Pavilion, the next you're sauntering into the Hammock Park for a breezy escape with a good read. There's also the Hi-Tea Pavilion for gatherings with friends to enliven your afternoons. Even your furry friends will have an expanse to call their own at the Paws Playground.



Tennis Court



Bars & Steps Fitness Station



Fitness Suite

INDULGE IN FITNESS

When it's time to rouse your muscles, be spoiled for choice. Head over to the indoor Fitness Suite or the Bars & Steps Fitness Station. With a jog and a trot, explore hidden gardens, nature trails, and more exercise spots throughout the property. Perfect your serve at the Tennis Court, or learn a new sport or two at the Multipurpose Court. There's always time for meditation at the Yoga Pavilion.



Wi-Fi Pavilion

STAY CONNECTED

Take advantage of a delightful perk when you need the rest of the world to converge at your fingertips. At the Wi-Fi Pavilion, you gain access to stylish workstations and seating to keep you network-ready in comfort. This is the good life in the fast lane, built into the design of your East Parc realm.

BEDAZZLE

BECOME

BELONG

BEHOLD

BEYOND

WEST PARC

A 360-degree lagoon dancing to its own spirited rhythm.

Cradled by lush terraced landscaping, your Family Lagoon is teeming with activities that are rare to find in one development – from pool amusements to waterfront revelries, BBQ parties to children's celebrations, water fitness to quiet lounging with nature.



Artist's impression

Family Lagoon

Savour a family getaway inspired by contemporary water parks.



Artist's impression

Lagoon Deck



Island Party Pavilion

PARTY HOP

Your Family Lagoon inspires the ultimate aquatic escapade. Host waterfront gatherings at the Island Party Pavilion and get everyone in a feasting mood at the Grill & Dine Island.

SPLASH AWAY

Bubble Jets and Kids' Water Jets offer magical spots for small children to play while you're getting a relaxing treat from the Body and Foot Massage Jets nearby. At the Kids' Water Playground, they can take delight in the rhythmic displays of fascinating water sprays while you're snuggled down at the Beanbag Lounge close by.



Kids' Water Jets



Children's Playground

PLAYTIME FOR EVERYONE

No park will ever be complete without a Children's Playground. At Parc Esta, there's always room for family bonding through fun and games at the outdoor facilities.



Junior Glamping Lawn

WHERE KIDS RULE

Have a birthday bash with a splash! The unique Kids' Party Pavilion right by the main pool offers sheltered seating and ample room for entertainment, play, rest and dining. Even the playful wall offers snug alcoves that inspire imaginative activities. Just steps away is the Junior Glamping Lawn complete with teepees and campfire-inspired lighting to indulge young explorers in rustic-style enjoyment amidst modern comforts.

BEDAZZLE

BECOME

BELONG

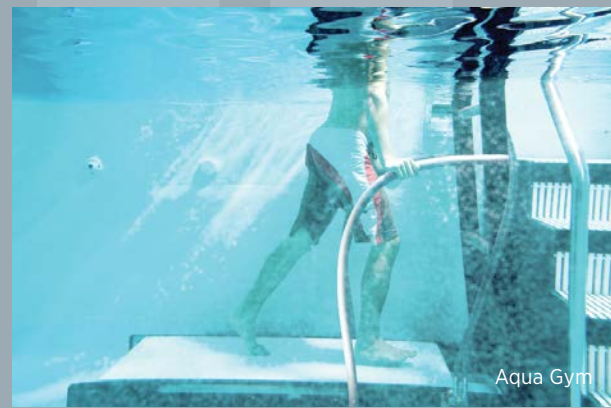
BEHOLD

BEYOND

An idyllic mix of nurture,
nature and adventure.

WORK IT OUT

Offering a holistic approach to your everyday getaways, Parc Esta ensures you can check fitness off your list even while you're at the lagoon. The Aqua Gym is integrated into the pool with state-of-the-art facilities. You can follow it up with a more intense workout at the Outdoor Multi Gym, which is equipped with a wide variety of weights, benches and cardio fitness equipment.



Aqua Gym



Outdoor Multi Gym



Water Bed

SNUGGLE DOWN

The best indulgence is to do absolutely nothing. Do it in style at Parc Esta. Find your favourite spot at the Cosy Lounge, Lagoon Deck, Sun Tan Loungers and Lawn Loungers. Or indulge your senses, and your green thumb, in the lush surrounds of the Herbs Garden.



Herbs Garden



Sun Tan Loungers

BELONG



3

CITY VIBRANCY IS TURNING EASTWARD



As the beacon of suburban development moves eastwards, Parc Esta stands poised on the threshold of a myriad new developments — existing and soon to come. Leisure and work facilities, healthcare and transport, they all fall within easy access to this highly investable destination.



SITUATED AT THE CONFLUENCE OF CONVENIENCES

Take delight in the sumptuous array of conveniences and amenities so close to your doorstep at Parc Esta. With an MRT station just a short walk away, and only a few minutes' drive to the expressways, reach the heart of the city and the rest of Singapore within minutes.



BEDAZZLE

BECOME

BELONG

BEHOLD

BEYOND

MORE TIME RELAXING, LESS TIME TRAVELLING

Parc Esta is a home that encompasses everything you need, connected to everywhere you need to be. All the benefits of an urban East lifestyle are virtually at your doorstep.



REPUTABLE SCHOOLS

Residents in the East are spoiled for choice when it comes to learning institutes and centres. Take your pick from these well-established Primary schools:

WITHIN 1KM

Haig Girls' School
Eunos Primary School

WITHIN 2KM

Tanjong Katong Primary School
CHIJ (Katong) Primary
Tao Nan School
St. Stephen's School
Kong Hwa School
Maha Bodhi School
Telok Kurau Primary School

Source: www.OneMap.sg and www.google.com.sg/maps


ORCHARD ROAD
9 STOPS

Like a walk-in wardrobe, our world-famous row of fashionable malls and premium hotels has everything for everyone.


WITHIN 16 MINS


CENTRAL BUSINESS DISTRICT
7 STOPS

Singapore's financial heart beats with the pulse of local and international companies in splendid sky-high structures.


WITHIN 12 MINS


SINGAPORE SPORTS HUB
4 STOPS

The multi-purpose facility houses Kallang Wave Mall and National Stadium with indoor and water sports arenas.


MARINA BAY SANDS
7 STOPS

Fronting Marina Bay, Singapore's most iconic hotel offers the world's largest infinity pool and award-winning dining options.


WITHIN 8 MINS


I12 KATONG MALL
6 MINS

Here's the go-to place for laid back dining and deluxe movie watching along historic Katong.


CHANGI AIRPORT
5 STOPS

With the East's exceptional transport convenience, go from sofa to plane seat via train or car in a matter of minutes.


WITHIN 4 MINS


EUNOS CRESCENT MARKET & FOOD COURT
3 MINS

From lor mee to biryani and western yummys, find good eats right next to Eunos MRT station.

EUNOS MRT STATION

The station on the East-West Line next to the bus interchange offers easy access to the rest of Singapore.

3 MINS WALK


EASTERN COASTAL LOOP
1 STOP

Cycle to Gardens By The Bay via Sims Avenue Park Connector located just steps from Kembangan MRT station.


HEARTBEAT@BEDOK
2 STOPS

Enjoy sporting activities, workshops, social bonding, and a cosy library at this spacious Integrated Complex.


BUGIS JUNCTION
5 STOPS

Located in a fabled Civic District, this mall delights with its sky-lit, air-conditioned lanes amidst historic shophouses.


KINEX
5 MINS

The family-friendly mall is your one-stop destination for relaxed shopping, dining and learning.


OLD AIRPORT ROAD FOOD CENTRE
2 STOPS

Find every local dish you could think of at one of the oldest and largest food courts on our island.


PAYA LEBAR QUARTER
1 STOP

Discover fresh live-work-play excitement in this upcoming hyper-modern regional centre.


PARKWAY PARADE
6 MINS

As the retail hub of Marine Parade, it boasts extensive fashion, lifestyle and medical outlets, plus a cinema.


EAST COAST PARK
10 MINS

The scenic 15km coastline is just one of the charms of this 185-ha sporting, dining and recreational park.

A PEEK AT YOUR NEIGHBOURHOOD

These are exciting times for the East side of Singapore. The already dynamic and thriving district is fast transforming into an even more cosmopolitan enclave, providing the ideal neighbourhood for residents.

NEW REGIONAL CENTRE AT PAYA LEBAR QUARTER



1M sq ft
Integrated Development

3 Grade-A
Office Towers

200
Retail and F&B Shops

10,000
New Workforce

45M
Projected Yearly Visitorship

4-min Drive
from Parc Esta

“The location of Paya Lebar Central has great potential to be a destination commercial hub.”

Source: www.ura.gov.sg/Corporate/Planning/Growth-areas/Paya-Lebar-Central

Paya Lebar Quarter is one of Singapore's largest and most progressive city precincts, being the most centrally located business hub outside of the city core. Fronting the Paya Lebar MRT interchange station, it is just a train stop from Eunos MRT, which is accessible within minutes on foot from Parc Esta. Envisioned to deliver a complete urban ecosystem, the highly anticipated development offers new live-work-play opportunities through its Grade-A office towers and a diverse range of lifestyle, entertainment and recreational amenities.

RE-ENERGISED SINGPOST CENTRE



“The launch of SingPost Centre underscores SingPost’s transformation for a future where technology is changing how people shop, dine and play.”

Mr Mervyn Lim, Deputy Group CEO, SingPost

5,328 sq ft
General Post Office

5-Storey
Smart Mall

130
Retail Shops

22,000 sq ft
Smart Supermarket

Rock-Climbing Gym

5-min Drive
from Parc Esta

The new SingPost Centre boasts exciting, smart shopping experiences beyond delivering 24/7 automated postal services. Located next to the Paya Lebar MRT station, the living lab is home to several tenants that showcase innovative technologies and pilot new ones. At NTUC FairPrice, shoppers get a virtual taste of select products through augmented reality, to add to its shop-and-go smart shopping facility. Cinephiles will enjoy Singapore's first all-laser cineplex by Golden Village. And foodies can look forward to impressive dining concepts. Not to forget a myriad of other lifestyle options such as the largest bouldering gym in Singapore.

UPGRADED MARINE COVE AT EAST COAST PARK



37,674 sq ft
Children's Playground

Wheelchair-friendly
Footpaths

Kids' Shower

Diverse Food Options

430
Parking Lots

10-min Drive
from Parc Esta

“With more than 7.5 million visits annually, East Coast Park is Singapore’s most popular park.”

*Mr Kong Yit San, Assistant Chief Executive Officer
Park Management and Lifestyle Cluster, NParks*

Located at the heart of East Coast Park, Marine Cove provides the perfect beachside hotspot for your family. Previously known as East Coast Recreation Centre in the 1980s, the upgraded Marine Cove now offers a contemporary glass-and-steel dining facility housing more diverse food options that include favourite fast foods, restaurant chains and coffee houses. The big draw is the open-air mega-playground – a haven for children of all ages – packed with exciting play equipment including swings, an 8m lighthouse-like tower with slides and a rope bridge, as well as a colourful rock-climbing wall.

EXPANDED EASTERN COASTAL LOOP



Embark on a seamless cycling, running or rollerblading journey, perhaps even a leisurely walking trip, along the extended Eastern Coastal Loop and soak in beautiful sceneries from East Coast Park to the city centre. Begin your adventure at the Siglap Park Connector along Sims Avenue right at the doorstep of Kembangan MRT Station. This route takes you to East Coast Park where an overhead bridge perpendicular to Fort Road will let you travel all the way to the Marina Bay area – past the Marina Bay Golf Course and Driving Range and through Gardens By The Bay East – with marvelous views accompanying you throughout.

42km
Coastal Track

Change to Marina Bay Area

The East is where you'll find many of our island's treasured addresses for good food, cultural nostalgia, and eclectic shops - with a wide selection located within minutes of your Parc Esta home.



KATONG & EAST COAST



At this quaint, well-established eatery along East Coast Road, hand-making yong tau foo is a daily tradition. Their famous light broth is prepared fresh from 5am. So are the stuffed ingredients, handpicked by Mr Koh himself. Whether you choose à la carte or a set plate, you'll taste the light, healthy flavour even without the sauces.

Ampang Niang Tou Fu
225 East Coast Rd



“Nowhere else in Singapore serves niang tou fu the way we do - like Mother's home-cooked food.”

Mr Koh Eng Han, Owner/Founder

“We belong to a laid-back community where the enjoyment of good food is a daily part of our lives.”

Mr Justin Lee, Manager

While it bears the name of its founding place, this cherished prawn noodle restaurant has embraced the Eastern vibe - neighbourly, family-centric and relaxed. It serves what is easily our island's best tasting prawn noodle dish, with its winning combination of thick, savoury soup, firm noodles and fresh jumbo prawns.

Beach Road Prawn Noodle House
370 East Coast Road



Quite possibly the first hat salon in Singapore is located at Joo Chiat, specialising in authentic, handwoven Panama hats from Ecuador. Perfect for our tropical weather, these hats come in a variety of styles and grades - sourced from only the finest weavers - and are endlessly customisable. Wide brimmed hats and fedoras are also available. Private appointments can be made, with personalised fittings for both men and women.

Hat of Cain
18 Joo Chiat Terrace



“One of the few Singaporean breakfast joints that still makes its own kaya.”

*Source:
lonelyplanet.com/singapore/restaurants*

This café serves a myriad of local baked goods such as kaya toast, muffins and custard tarts. The shophouse's 1960s aesthetic will make you feel like you've gone back in time, while the wide selection of good ol' desserts will have you coming back for more.

Chin Mee Chin Confectionery
204 East Coast Rd

MOUNTBATTEN



Here's a cosy, family-friendly café located in the Goodman Arts Centre, serving a blend of Australian and Asian cuisine, including an all day breakfast menu, thin crust pizzas, gourmet coffee and many more. Café Melba hosts live music on Fridays and mini-festivals, making it the perfect place to enjoy relaxing meals and celebrations for adults and kids alike.

Café Melba at Goodman Arts Centre
90 Goodman Road Block N, 01-56



Located at the Junction of Mountbatten and Tanjong Katong Road, Song Lang Garden is the one-stop destination for your gardening needs. Housing a large variety of indoor and outdoor plants, and providing consultation services, this nursery is sure to give you new inspirations for your homes.

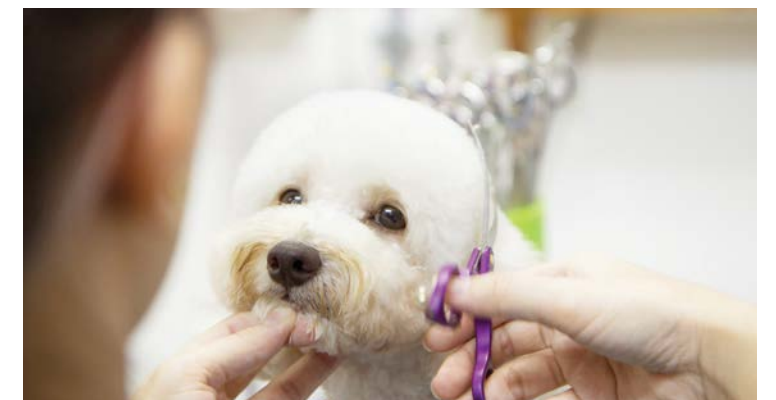
Song Lang Garden
378 Tanjong Katong Road

PAYA LEBAR



Absolutely picture-perfect, this green paradise of wholesome food, fresh flowers and handcrafted furniture pieces looks like it jumped right out of a magazine. Every bit warm and welcoming, it is a glorious place for just about any occasion or gathering. Check out their waffles and beef lasagna.

Knots Cafe and Living
160 Paya Lebar Road, 01-07 Orion@PayaLebar



A care centre for pets, Pet Loft offers several services for your pets, including a grooming session that can help detect signs of health issues, photography services, and even a spa. Pet Loft is also a great day care centre for your furry friends if you're unable to accompany them for the day, providing proper food, necessities, and comfort.

Pet Loft
371 Upper Paya Lebar Rd, 01-02 Yi Kai Court

“We're more than just a shop in a house; we're the cradle of authentic Peranakan culture.”

Madam Bebe Seet, Owner/Founder



A museum, beadwork studio, restaurant and home to the owner's massive personal collection of all things Nyonya, Rumah Bebe stands proud as one of the country's landmark shophouses that has stood the test of time. Your unique sensorial experience begins the moment you set eyes on its charming multi-coloured façade.

Rumah Bebe Peranakan Shop
113 East Coast Road

BEDAZZLE

BECOME

BELONG

BEHOLD

BEYOND

YOUR NEW HOME, YOUR PERSONAL PRIDE

Clever spatial planning reveals homes that are open and generous in scale, offering natural light and a sense of intimacy with the surroundings.



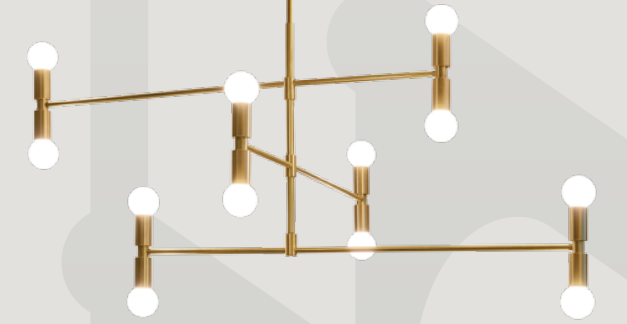
Artist's Impression

Unit with Private Enclosed Space

Every unit from one to five-bedroom residences has a balcony or private enclosed space that opens out to vast unhindered views.

4

BEHOLD



SUMPTUOUS SPACES TO SETTLE IN AND UNWIND

Space in a fast-paced, congested world reigns as the ultimate luxury. At Parc Esta, you get all the breathing room you desire, inside and out.



The synergy of lush materials and sophisticated colours presents simple elegance in refreshing ways, making every living space a real pleasure to personalise.



Clean lines and well-proportioned spaces make a striking first impression, with contemporary styling adding fashionable flair to inspire a sophisticated yet relaxed lifestyle.

Choose from a variety of units from one to five-bedroom apartments. While each one is bright, airy and elegant, top floor units come with high-ceilinged living rooms.





For illustration purposes only.

The spacious bedrooms offer design cues with great attention to detail to create a calming experience in an organic, fresh environment.



For illustration purposes only.

Wherever you look, you will be reminded of luxury and exclusivity. There is a private lift for all five-bedroom apartments, which are equipped with upscale comforts including wet and dry kitchens.



BEYOND

FINE DETAILS THAT EXCEED EXPECTATIONS

At Parc Esta, premium quality materials, exquisite fixtures and fittings, and the latest technology create outstanding living spaces that combine timeless sensibilities with contemporary desires.



COMPREHENSIVE REMOTE GATEWAY

Use a smartphone or any Internet-enabled device to stay in full control of your home automation and to access Parc Esta facilities at your convenience.



SMART HOME

Gateway with P/T Camera

Day-to-night home monitoring with playback capability

Biometric Digital Lock Set

Main door security with break-in and low-battery alerts

Air Conditioner Control

Remote air conditioning control for more energy efficient usage



SMART GUEST SERVICE

QR Code Visitor Access

Quick, fuss-free guest entry at the ingress lane

Video Call

Video-assisted communication with guests at your front door



SMART COMMUNITY

Crowd Watch

Real-time views of public spaces at Parc Esta

Facility Booking

Plan events and book facilities at your fingertips

Smart Parcel Locker

Stores your delivery package using a unique access code

Vehicle Season Parking Application

Simplifies your access to Parc Esta's parking facility

Every residential unit will be supplied and installed with 1 Gateway with IP Camera, 1 Digital Lock Set, and 2 Air Conditioner Controls (1 each for the Living Room and Master Bedroom). Smart expansion items/devices can be purchased directly from the Smart Home's vendor at buyer's own cost.



For illustration purposes only.

SMART MIRROR

Selected units come with a smart mirror in the kitchen, which transforms into a digital touch screen with an elegant interface. Enjoy seamless connectivity to your favourite sites, catch up on your Instagram stories or watch a cooking tutorial on YouTube to inspire your next family meal.



For illustration purposes only.

Fully Equipped Kitchen

FIT FOR A CHEF

Every Parc Esta home boasts a functional and fully equipped kitchen that fulfills the demands of modern connoisseurs – designer fittings and the finest appliances including a SMEG hob, hood, oven, refrigerator and washer-cum-dryer. In selected units, the kitchen comes with a sleek wine chiller from Vintec.



BEDAZZLE

BECOME

BELONG

BEHOLD

BEYOND

A HOME DEFINED BY HIGH-END DESIGN

You will never have to settle for less than the best. In comfort, function and style, there is a heightened sense of inventiveness, and luxury flows all the way to the immaculate bathrooms.



En suites come with top-grade sanitary fittings from Hansgrohe, marble vanity countertops, fashionable sinks and signature fixtures from Villeroy & Boch.



For illustration purposes only.



For illustration purposes only.

Every detail is delivered with thoughtful touches – a washlet tucked neatly inside every latrine, mirrors with built-in lights, and a smart storage integrated into the bedroom's wardrobe. Compartments of varying sizes and handy hooks help optimise closet space beautifully.

A SPRAWLING ESTATE OF REFINED INDULGENCES

Parc Esta offers exquisite residences and experiences for every desire. Own more than just a fabulous home. Unlock a lifestyle that will spark a heightened level of relaxation, rejuvenation and wellbeing at your own pace.

EUNOS MRT STATION
3 MINS WALK

SIMS AVENUE



CHANGI ROAD

For illustration purposes only.

SITE PLAN

WEST PARC

- 1 Family Lagoon
- 2 Water Beds
- 3 Body Massage Jets
- 4 Foot Massage Jets
- 5 Bubble Jets
- 6 Kids' Water Jets
- 7 Grill & Dine Island
- 8 Kids' Water Playground
- 9 Island Party Pavilion
- 10 Kids' Party Pavilion
- 11 Junior Glamping Lawn
- 12 Beanbag Lounge
- 13 Palm Pool
- 14 Cosy Lounge
- 15 Lagoon Deck

GRAND PARC

- 16 Fitness Pavilion
- 17 Aqua Gym
- 18 Sun Tan Loungers
- 19 Lawn Loungers
- 20 Herbs Garden
- 21 Children's Playground
- 22 Outdoor Multi Gym

EAST PARC

- 1 50m Lap Pool
- 2 Jacuzzi Pools
- 3 Foot Reflexology Pavilion
- 4 Lawn
- 5 Wi-Fi Pavilion
- 6 Parc Clubhouse
- 7 Poolside Dining Verandah
- 8 Pool Deck
- 9 Luxe Cabanas
- 10 Sun Beds
- 11 Garden Lounge
- 12 Lantern Promenade
- 13 Firefly Promenade
- 14 Cabana Park
- 15 Bicycle Lift

OTHERS

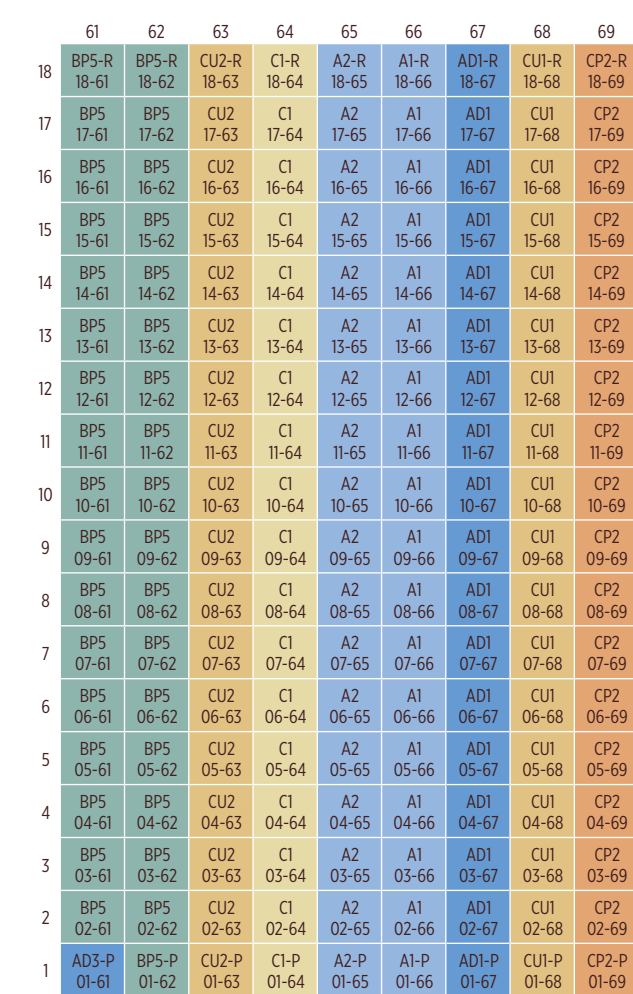
- A Jogging Trail
- B Guard Post
- C Vehicular Ingress & Egress
- D Pedestrian Side Gate

BASEMENT

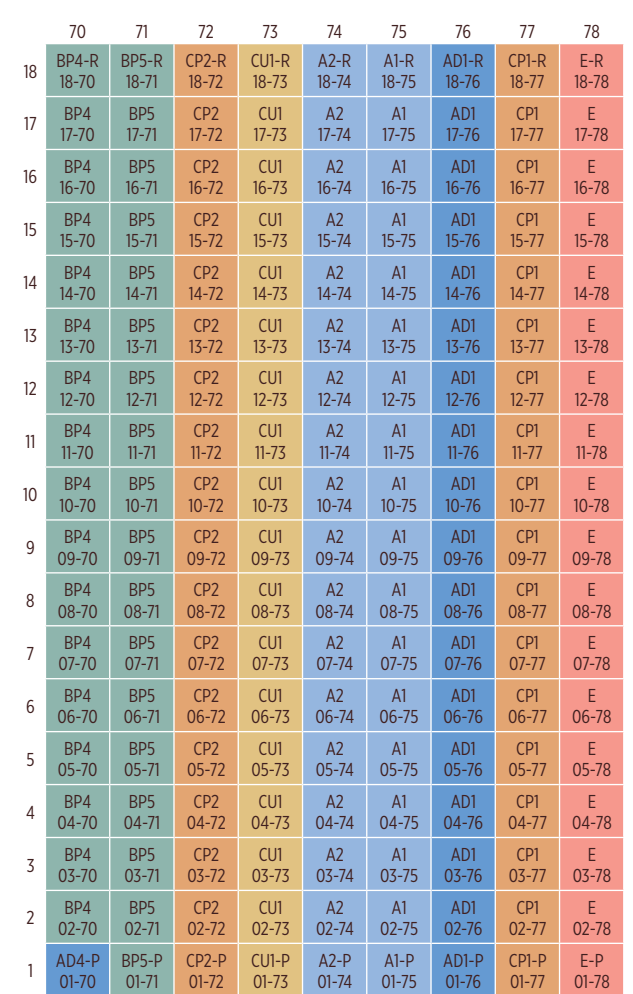
- E Shoppes @ Parc Esta
- F Management Office
- G Transformer Room
- H Substation
- I Bin Centre

SCHEMATIC DIAGRAM

BLOCK 914 SIMS AVENUE (S)408973

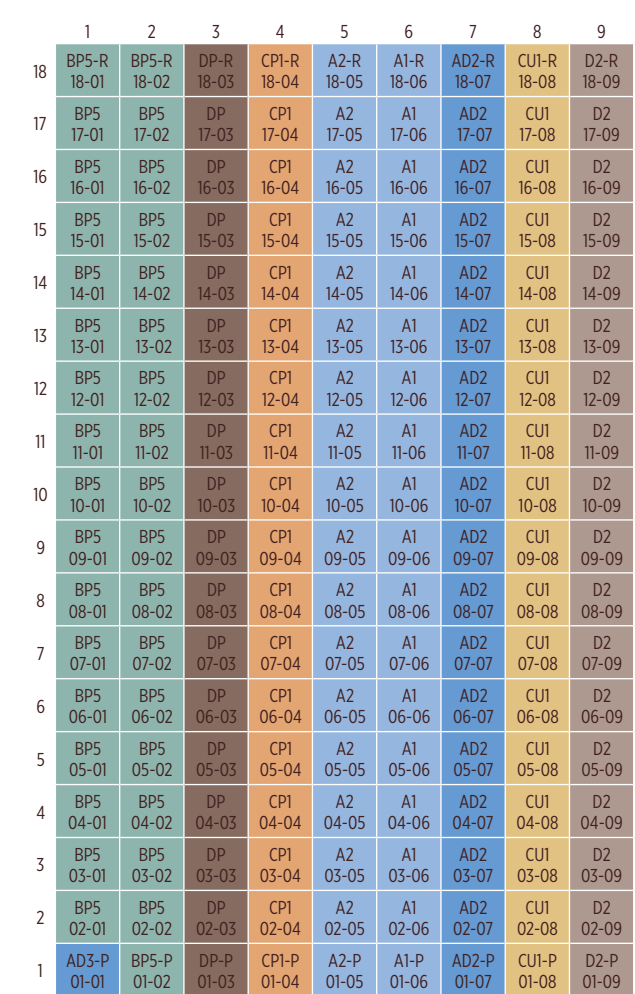


BLOCK 916 SIMS AVENUE (S)408974

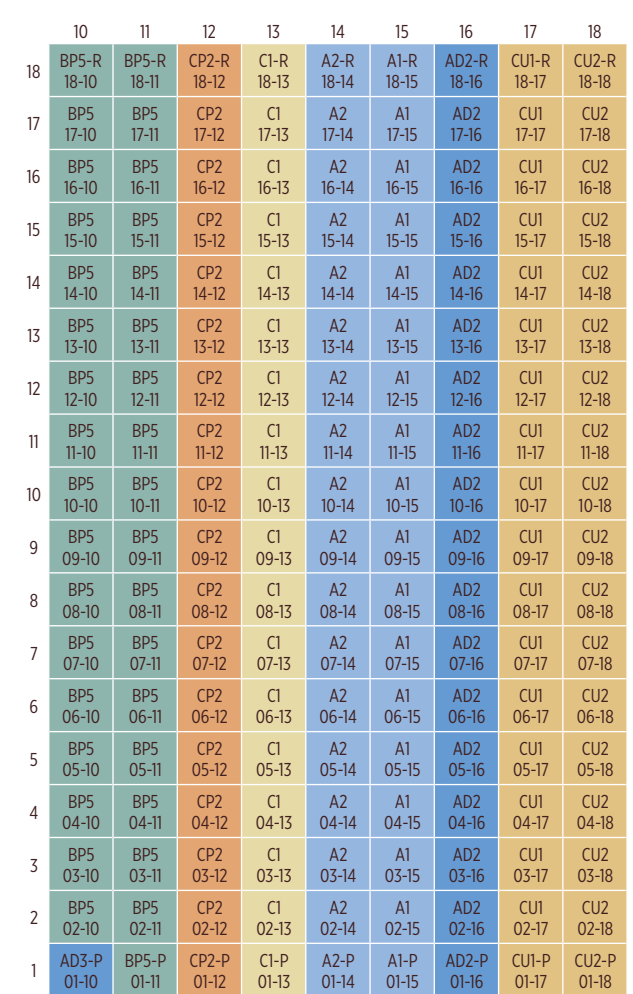


- TYPE A1/A2**
1-Bedroom
- TYPE AD1/AD2/AD3-P/AD4-P**
1-Bedroom + Study
- TYPE B1/B2/B3/B4**
2-Bedroom
- TYPE BP1/BP2/BP3/BP4/BP5**
2-Bedroom Premium
- TYPE BD1/BD2/BD3**
2-Bedroom + Study
- TYPE C1/C2/C3**
3-Bedroom
- TYPE CU1/CU2**
3-Bedroom + Study
- TYPE CP1/CP2**
3-Bedroom Premium
- TYPE D1/D2**
4-Bedroom
- TYPE DP**
4-Bedroom Premium
- TYPE E**
5-Bedroom

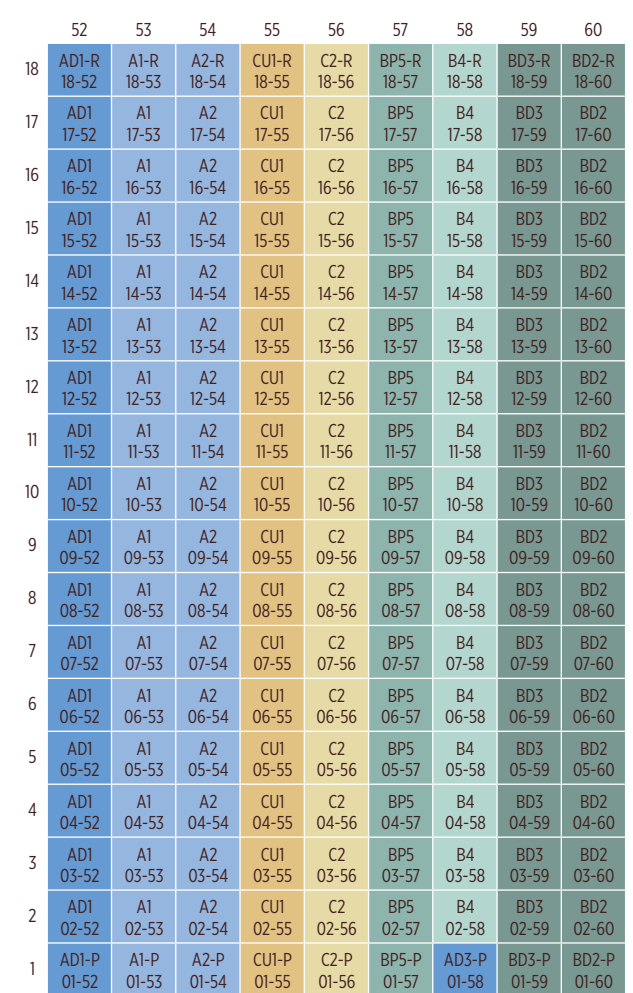
BLOCK 900 SIMS AVENUE (S)408966



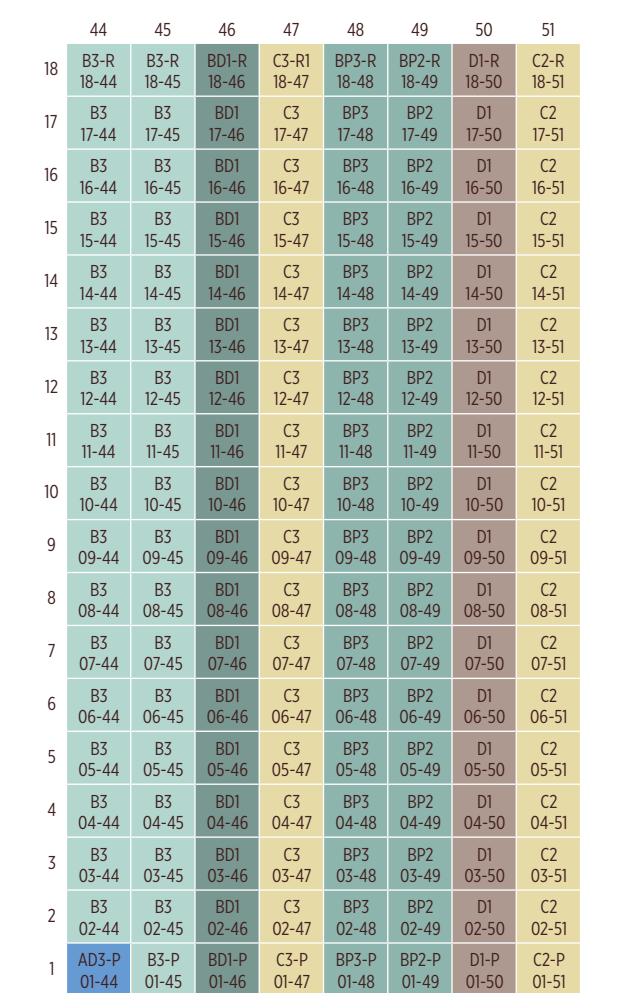
BLOCK 902 SIMS AVENUE (S)408967



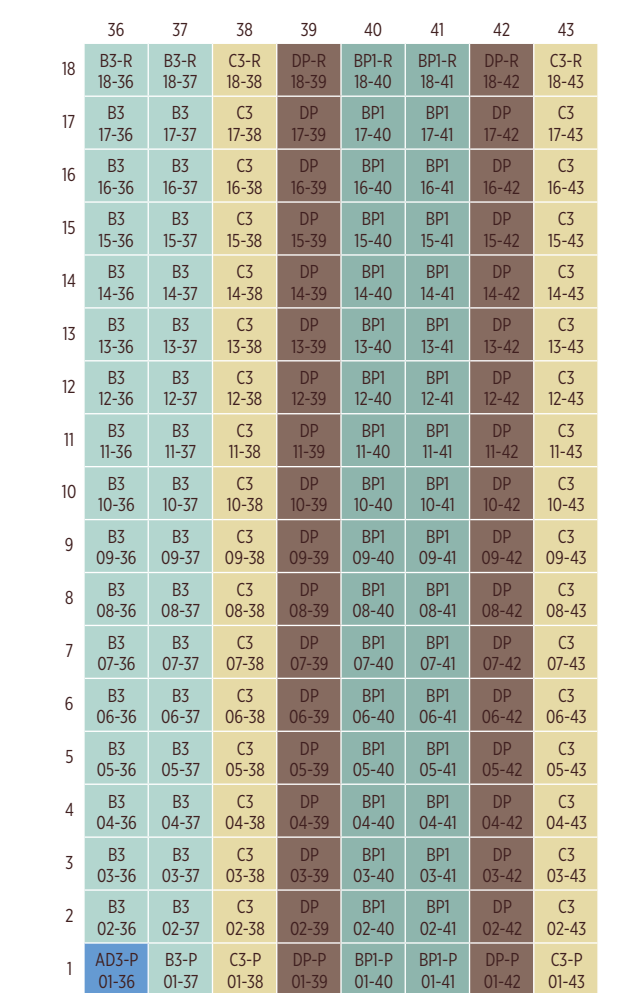
BLOCK 912 SIMS AVENUE (S)408972



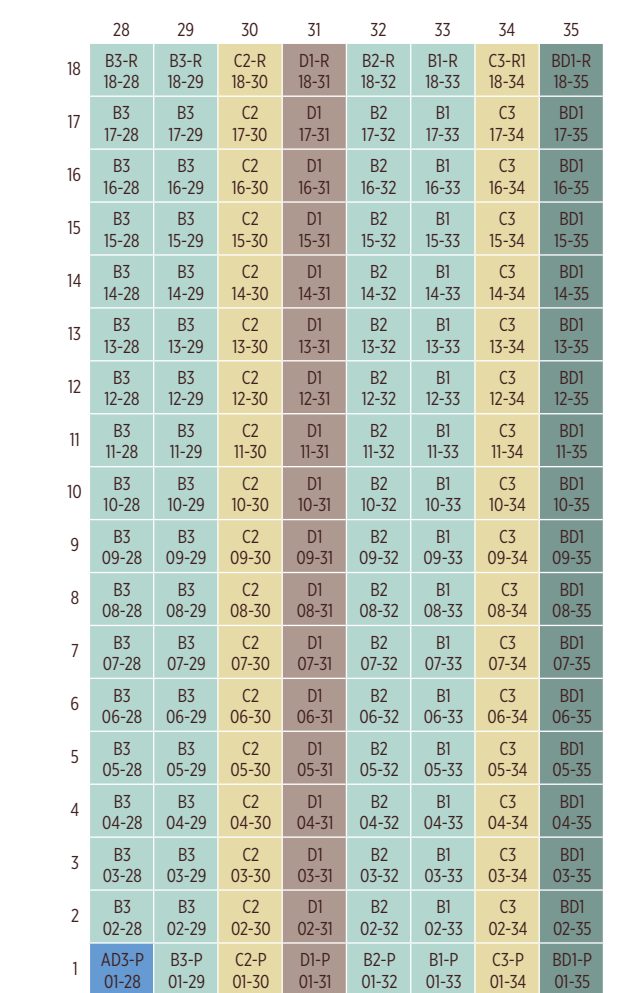
BLOCK 910 SIMS AVENUE (S)408971



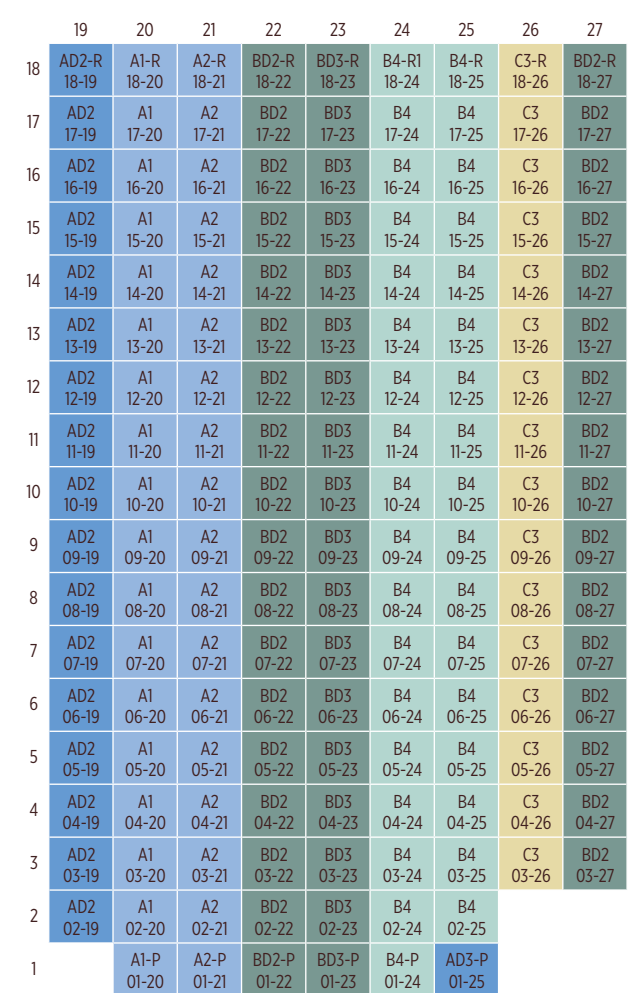
BLOCK 908 SIMS AVENUE (S)408970



BLOCK 906 SIMS AVENUE (S)408969



BLOCK 904 SIMS AVENUE (S)408968





1-Bedroom

TYPE A1

39 sq m | 420 sq ft

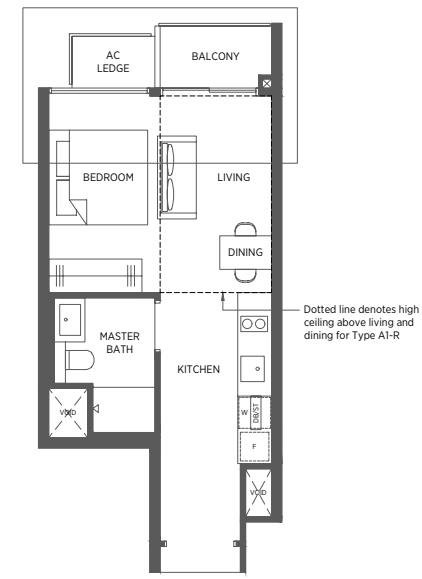
#02-06 to #17-06
#02-15 to #17-15
#02-20 to #17-20*
#02-53 to #17-53*
#02-66 to #17-66
#02-75 to #17-75

TYPE A1-R

48 sq m | 517 sq ft

#18-06
#18-15
#18-20*
#18-53*
#18-66
#18-75

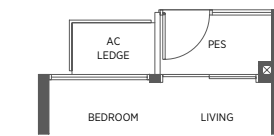
Incl. of 9 sq m | 97 sq ft of void area (high ceiling) above living & dining



TYPE A1-P

39 sq m | 420 sq ft

#01-06
#01-15
#01-20*
#01-53*
#01-66
#01-75



TYPE A2

42 sq m | 452 sq ft

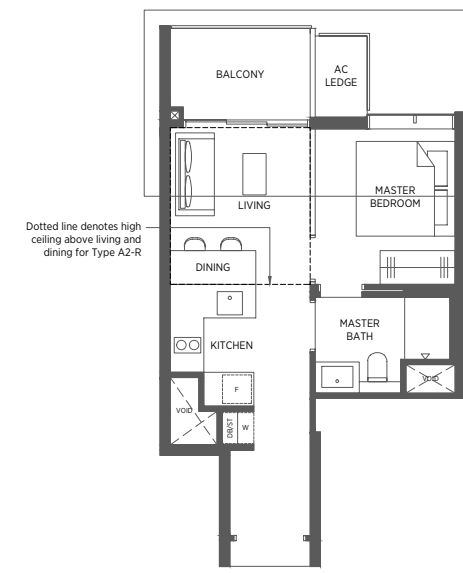
#02-05 to #17-05
#02-14 to #17-14
#02-21 to #17-21*
#02-54 to #17-54*
#02-65 to #17-65
#02-74 to #17-74

TYPE A2-R

51 sq m | 549 sq ft

#18-05
#18-14
#18-21*
#18-54*
#18-65
#18-74

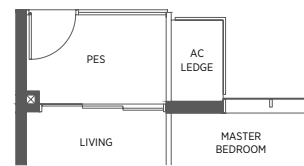
Incl. of 9 sq m | 97 sq ft of void area (high ceiling) above living & dining



TYPE A2-P

42 sq m | 452 sq ft

#01-05
#01-14
#01-21*
#01-54*
#01-65
#01-74



1-Bedroom + Study

TYPE AD1

48 sq m | 517 sq ft

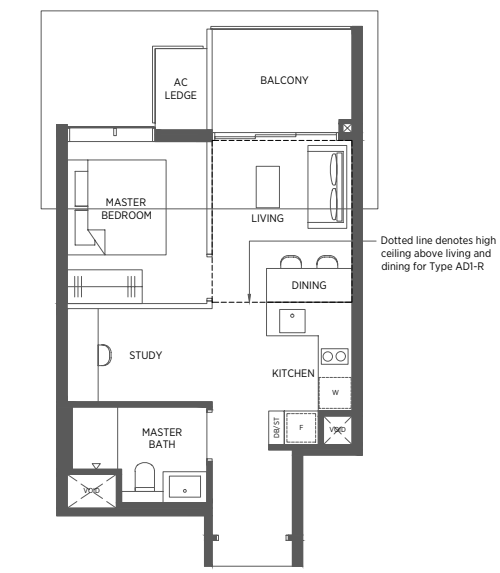
#02-52 to #17-52*
#02-67 to #17-67
#02-76 to #17-76

TYPE AD1-R

57 sq m | 614 sq ft

#18-52*
#18-67
#18-76

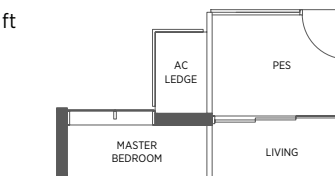
Incl. of 9 sq m | 97 sq ft of void area (high ceiling) above living & dining



TYPE AD1-P

48 sq m | 517 sq ft

#01-52*
#01-67
#01-76



TYPE AD2

49 sq m | 527 sq ft

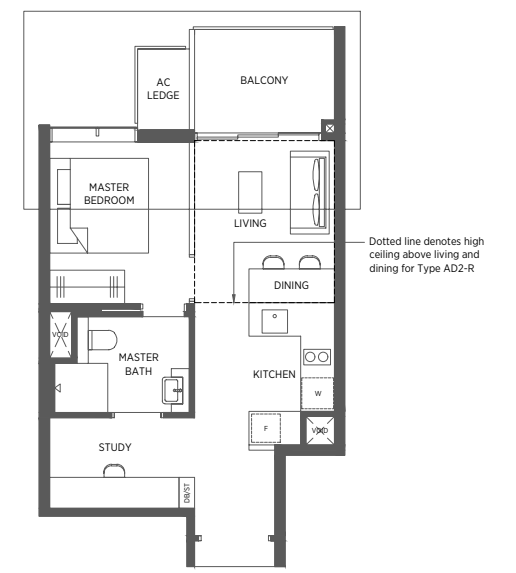
#02-07 to #17-07
#02-16 to #17-16
#02-19 to #17-19*

TYPE AD2-R

58 sq m | 624 sq ft

#18-07
#18-16
#18-19*

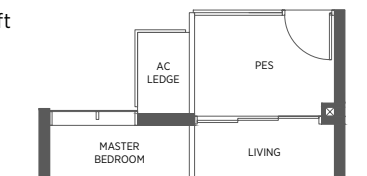
Incl. of 9 sq m | 97 sq ft of void area (high ceiling) above living & dining



TYPE AD2-P

49 sq m | 527 sq ft

#01-07
#01-16



TYPE AD3-P

49 sq m | 527 sq ft

#01-01
#01-10
#01-25*
#01-28
#01-36
#01-44
#01-58*
#01-61

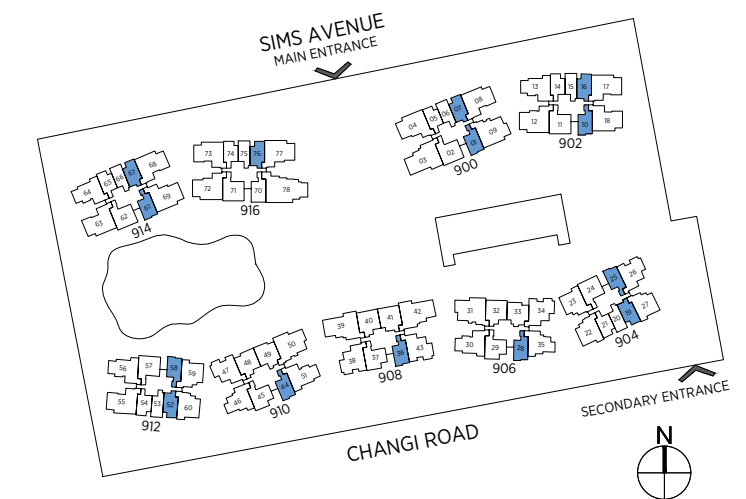
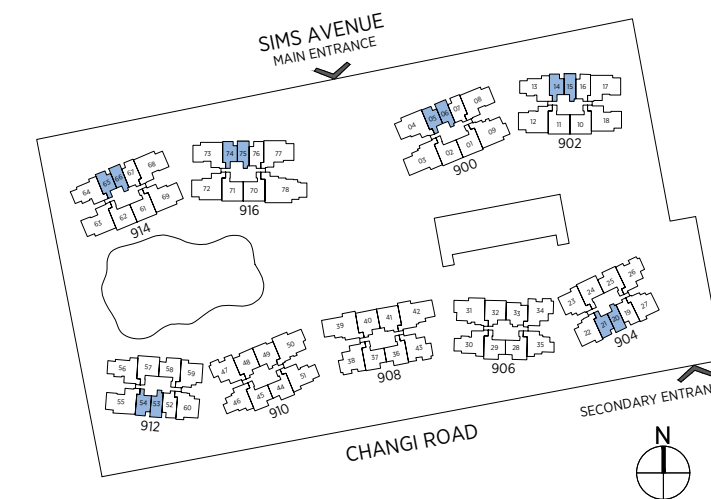


* Denotes mirror image

Area includes a/c ledge, balcony and void area (high ceiling). The plans are subject to change as may be required or approved by the relevant authorities. Areas are approximate measurements only and are subject to final survey. Plans are not drawn to scale and do not form part of the contract.

* Denotes mirror image

Area includes a/c ledge, balcony and void area (high ceiling). The plans are subject to change as may be required or approved by the relevant authorities. Areas are approximate measurements only and are subject to final survey. Plans are not drawn to scale and do not form part of the contract.



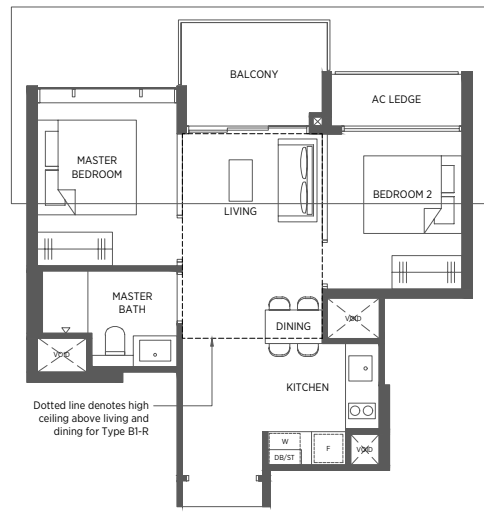
2-Bedroom

TYPE B1 TYPE B1-R

54 sq m | 581 sq ft 65 sq m | 700 sq ft

#02-33 to #17-33 #18-33

Incl. of 11 sq m | 118 sq ft of void area (high ceiling) above living & dining



TYPE B2 TYPE B2-R

56 sq m | 603 sq ft 64 sq m | 689 sq ft

#02-32 to #17-32 #18-32

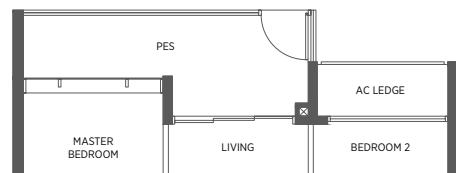
Incl. of 8 sq m | 86 sq ft of void area (high ceiling) above living & dining



TYPE B1-P

58 sq m | 624 sq ft

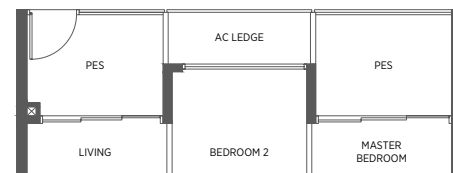
#01-33



TYPE B2-P

61 sq m | 657 sq ft

#01-32



2-Bedroom

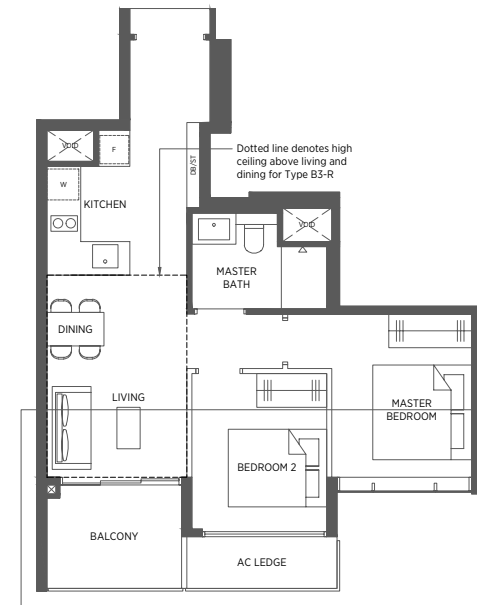
TYPE B3 TYPE B3-R

59 sq m | 635 sq ft 70 sq m | 753 sq ft

#02-28 to #17-28*
#02-29 to #17-29
#02-36 to #17-36*
#02-37 to #17-37
#02-44 to #17-44*
#02-45 to #17-45

#18-28*
#18-29
#18-36*
#18-37
#18-44*
#18-45

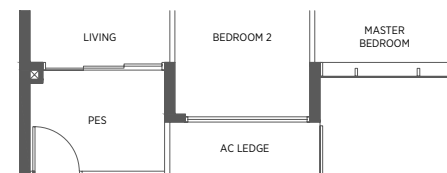
Incl. of 11 sq m | 118 sq ft of void area (high ceiling) above living & dining



TYPE B3-P

59 sq m | 635 sq ft

#01-29
#01-37
#01-45



TYPE B4 TYPE B4-R TYPE B4-R1

59 sq m | 635 sq ft 69 sq m | 743 sq ft 70 sq m | 753 sq ft

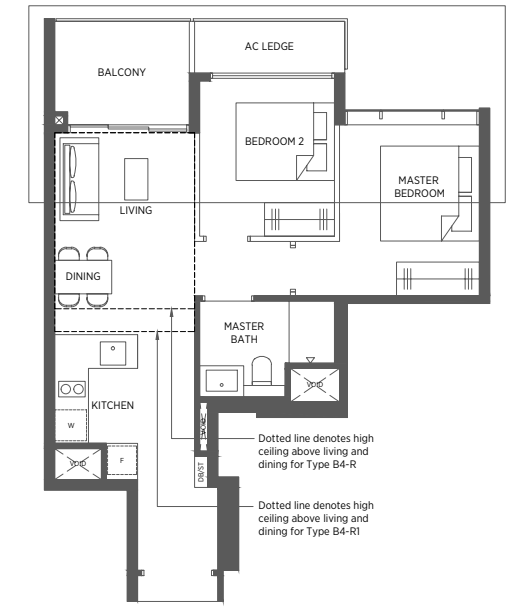
#02-24 to #17-24
#02-25 to #17-25*
#02-58 to #17-58*

#18-25*
#18-58*

Incl. of 10 sq m | 108 sq ft of void area (high ceiling) above living & dining

#18-24

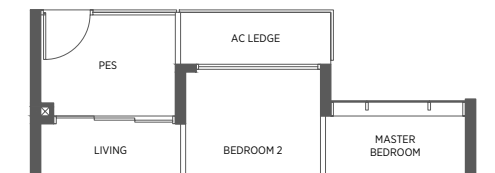
Incl. of 11 sq m | 118 sq ft of void area (high ceiling) above living & dining



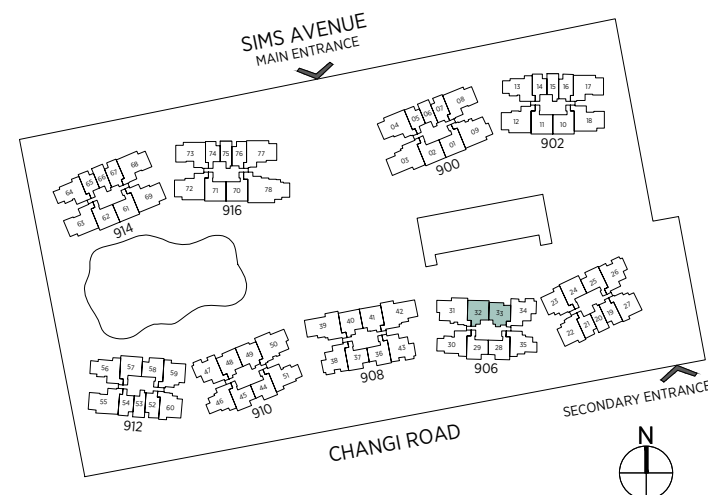
TYPE B4-P

59 sq m | 635 sq ft

#01-24

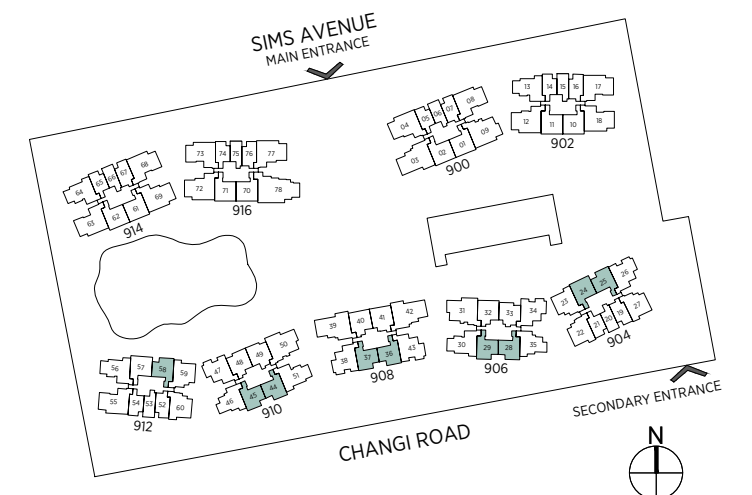


Area includes a/c ledge, balcony and void area (high ceiling). The plans are subject to change as may be required or approved by the relevant authorities. Areas are approximate measurements only and are subject to final survey. Plans are not drawn to scale and do not form part of the contract.



* Denotes mirror image

Area includes a/c ledge, balcony and void area (high ceiling). The plans are subject to change as may be required or approved by the relevant authorities. Areas are approximate measurements only and are subject to final survey. Plans are not drawn to scale and do not form part of the contract.



2-Bedroom (Premium)

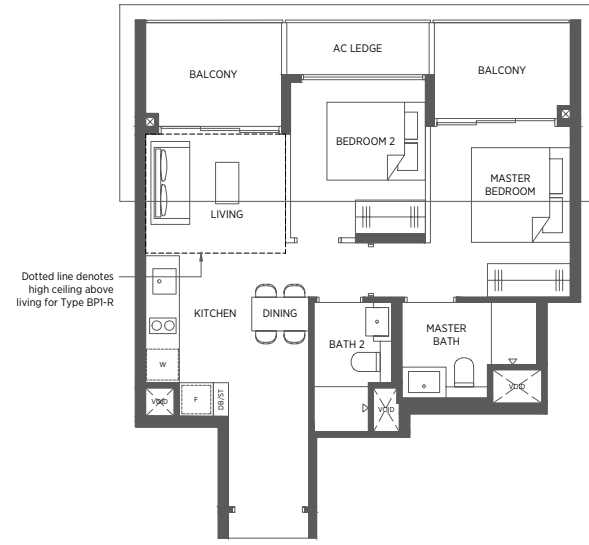
TYPE BP1 TYPE BP1-R

65 sq m | 700 sq ft 72 sq m | 775 sq ft

#02-40 to #17-40
#02-41 to #17-41*

#18-40
#18-41*

Incl. of 7 sq m | 75 sq ft of void area (high ceiling) above living



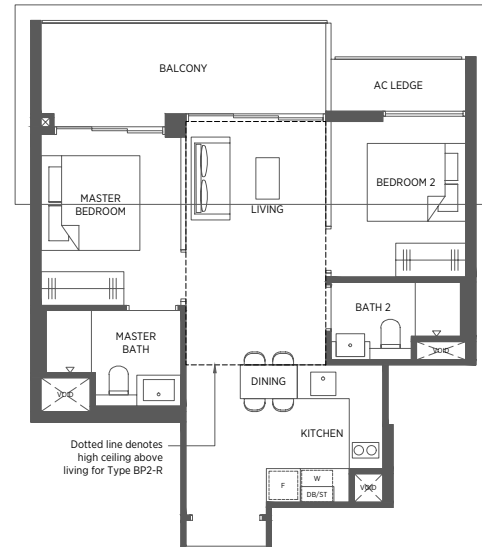
TYPE BP2 TYPE BP2-R

66 sq m | 710 sq ft 80 sq m | 861 sq ft

#02-49 to #17-49

#18-49

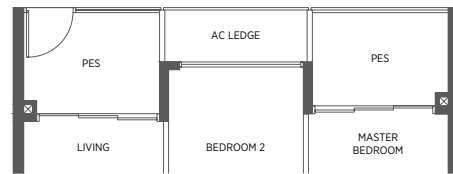
Incl. of 14 sq m | 151 sq ft of void area (high ceiling) above living



TYPE BP1-P

65 sq m | 700 sq ft

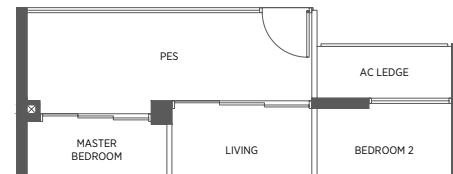
#01-40
#01-41*



TYPE BP2-P

66 sq m | 710 sq ft

#01-49



2-Bedroom (Premium)

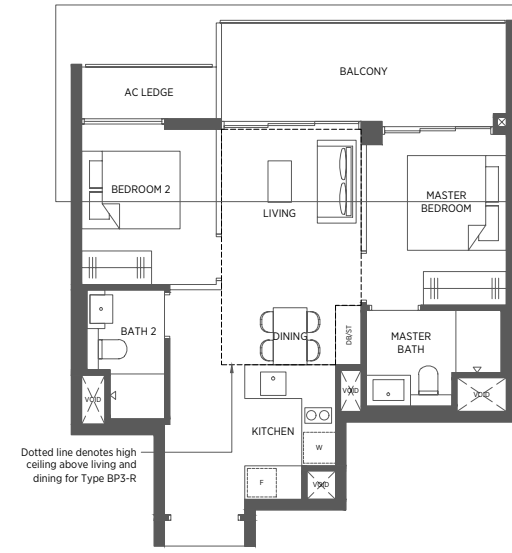
TYPE BP3 TYPE BP3-R

67 sq m | 721 sq ft 80 sq m | 861 sq ft

#02-48 to #17-48

#18-48

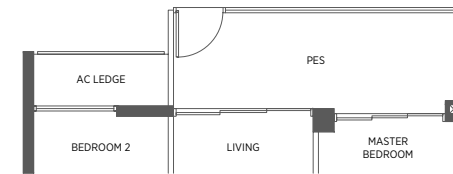
Incl. of 13 sq m | 140 sq ft of void area (high ceiling) above living & dining



TYPE BP3-P

67 sq m | 721 sq ft

#01-48



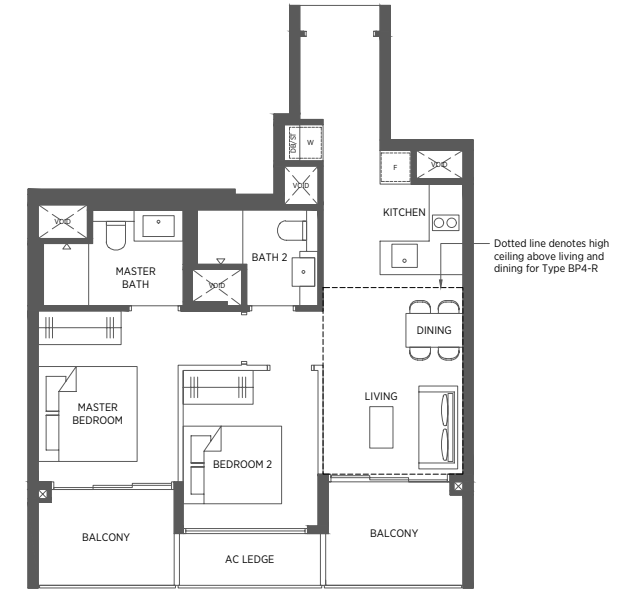
TYPE BP4 TYPE BP4-R

68 sq m | 732 sq ft 79 sq m | 850 sq ft

#02-70 to #17-70

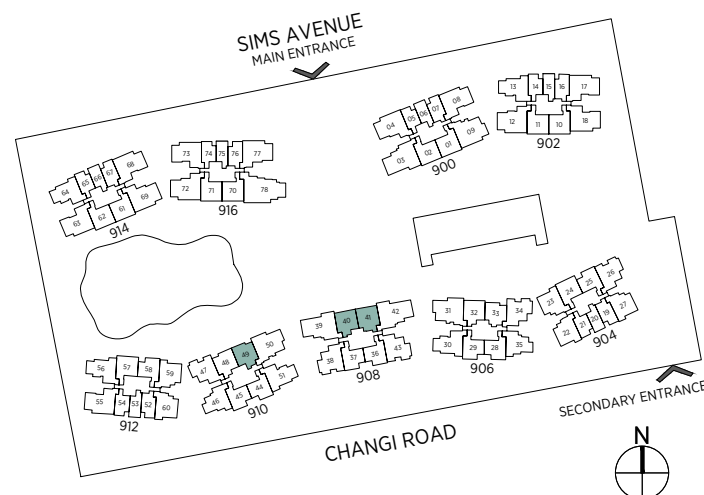
#18-70

Incl. of 11 sq m | 118 sq ft of void area (high ceiling) above living & dining

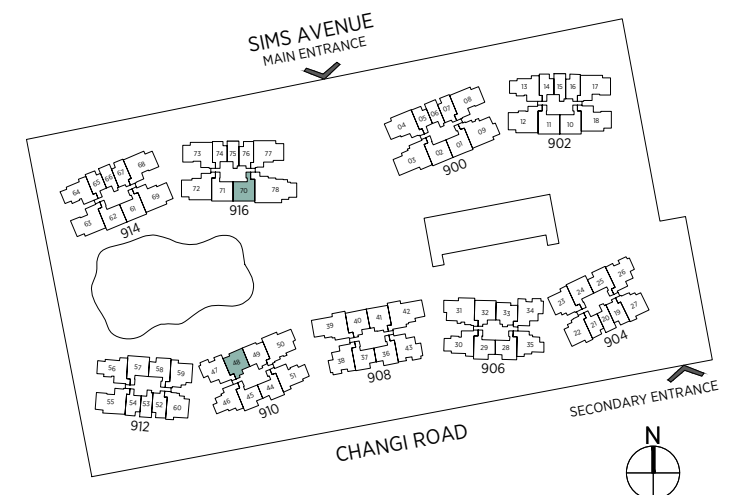


* Denotes mirror image

Area includes a/c ledge, balcony and void area (high ceiling). The plans are subject to change as may be required or approved by the relevant authorities. Areas are approximate measurements only and are subject to final survey. Plans are not drawn to scale and do not form part of the contract.



Area includes a/c ledge, balcony and void area (high ceiling). The plans are subject to change as may be required or approved by the relevant authorities. Areas are approximate measurements only and are subject to final survey. Plans are not drawn to scale and do not form part of the contract.



2-Bedroom (Premium)

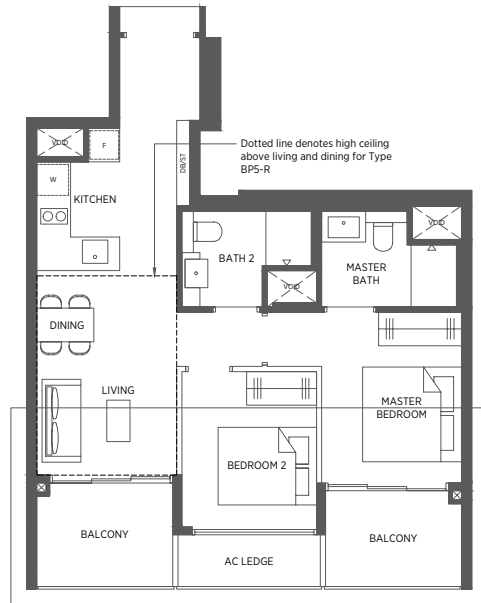
TYPE BP5 TYPE BP5-R

69 sq m | 743 sq ft 80 sq m | 861 sq ft

#02-01 to #17-01*
#02-02 to #17-02
#02-10 to #17-10*
#02-11 to #17-11
#02-57 to #17-57*
#02-61 to #17-61*
#02-62 to #17-62
#02-71 to #17-71

#18-01*
#18-02
#18-10*
#18-11
#18-57*
#18-61*
#18-62
#18-71

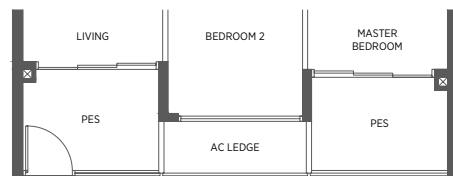
Incl. of 11 sq m | 118 sq ft of void area (high ceiling) above living & dining



TYPE BP5-P

69 sq m | 743 sq ft

#01-02
#01-11
#01-57*
#01-62
#01-71



2-Bedroom + Study

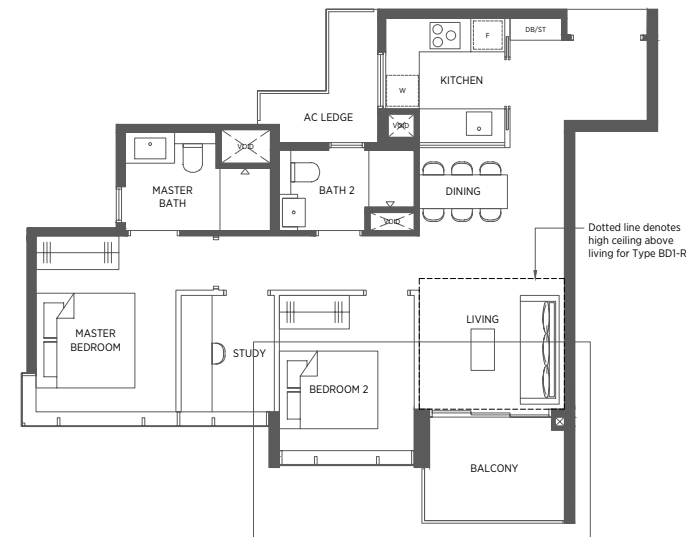
TYPE BD1 TYPE BD1-R

77 sq m | 829 sq ft 85 sq m | 915 sq ft

#02-35 to #17-35*
#02-46 to #17-46

#18-35*
#18-46

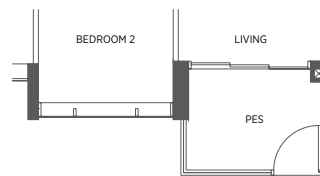
Incl. of 8 sq m | 86 sq ft of void area (high ceiling) above living



TYPE BD1-P

77 sq m | 829 sq ft

#01-35*
#01-46



2-Bedroom + Study

TYPE BD2 TYPE BD2-R

78 sq m | 840 sq ft 95 sq m | 1023 sq ft

#02-22 to #17-22*
#03-27 to #17-27
#02-60 to #17-60

#18-22*
#18-27
#18-60

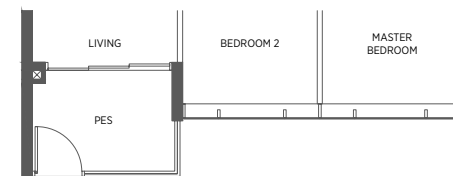
Incl. of 17 sq m | 183 sq ft of void area (high ceiling) above living & dining



TYPE BD2-P

78 sq m | 840 sq ft

#01-22*
#01-60



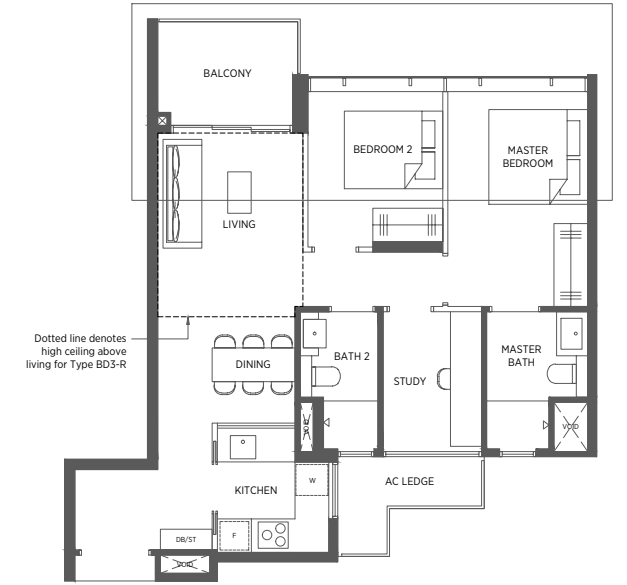
TYPE BD3 TYPE BD3-R

78 sq m | 840 sq ft 89 sq m | 958 sq ft

#02-23 to #17-23*
#02-59 to #17-59

#18-23*
#18-59

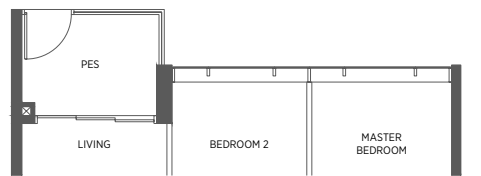
Incl. of 11 sq m | 118 sq ft of void area (high ceiling) above living



TYPE BD3-P

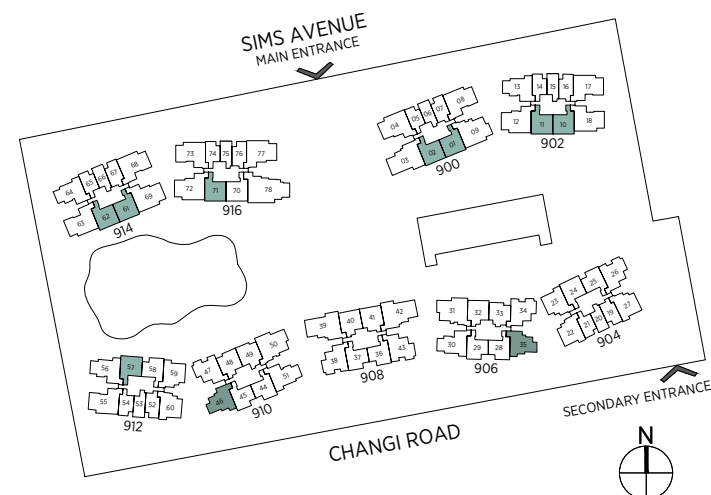
78 sq m | 840 sq ft

#01-23*
#01-59



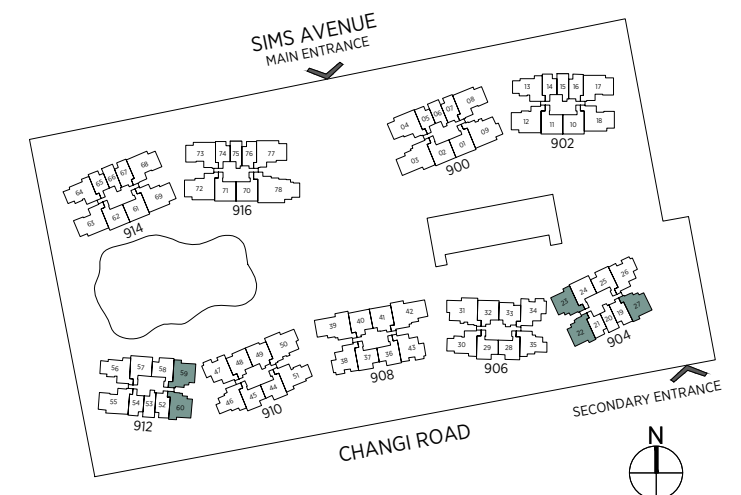
* Denotes mirror image

Area includes a/c ledge, balcony and void area (high ceiling). The plans are subject to change as may be required or approved by the relevant authorities. Areas are approximate measurements only and are subject to final survey. Plans are not drawn to scale and do not form part of the contract.



* Denotes mirror image

Area includes a/c ledge, balcony and void area (high ceiling). The plans are subject to change as may be required or approved by the relevant authorities. Areas are approximate measurements only and are subject to final survey. Plans are not drawn to scale and do not form part of the contract.

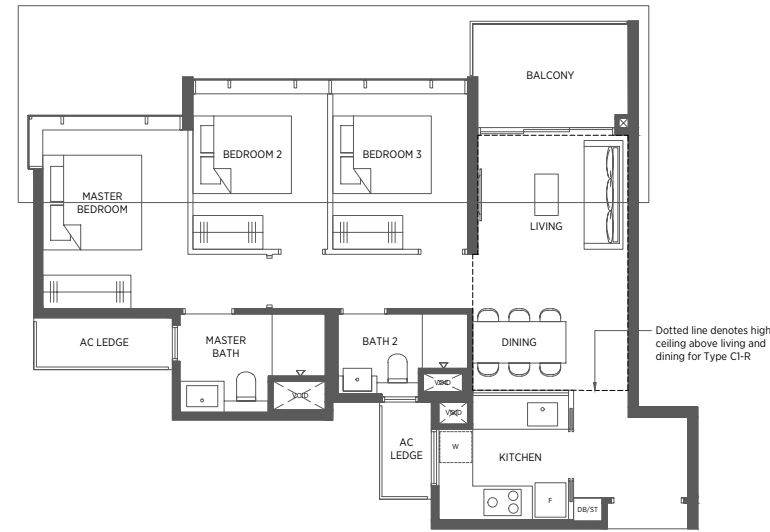


3-Bedroom

TYPE C1 84 sq m | 904 sq ft
TYPE C1-R 100 sq m | 1076 sq ft

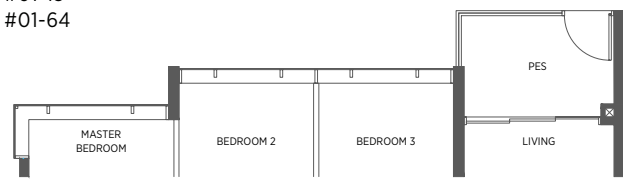
#02-13 to #17-13
 #02-64 to #17-64

Incl. of 16 sq m | 172 sq ft of void area (high ceiling) above living & dining



TYPE C1-P 84 sq m | 904 sq ft

#01-13
 #01-64

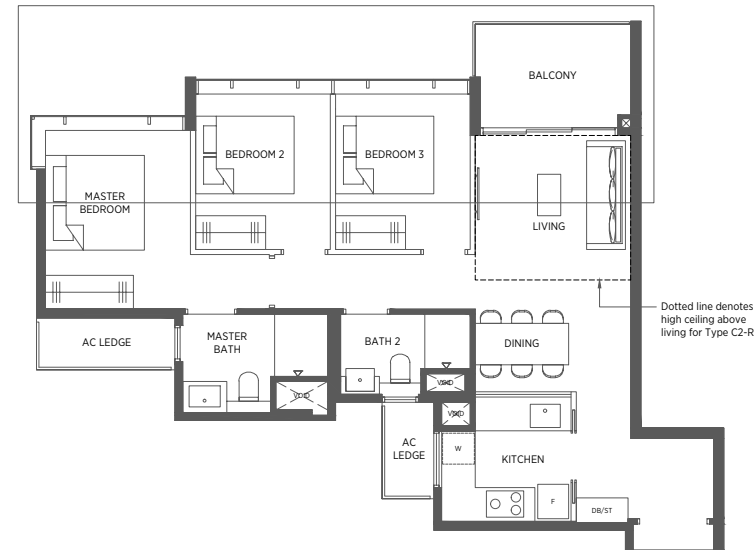


TYPE C2 85 sq m | 915 sq ft
TYPE C2-R 94 sq m | 1012 sq ft

#02-30 to #17-30*
 #02-51 to #17-51
 #02-56 to #17-56

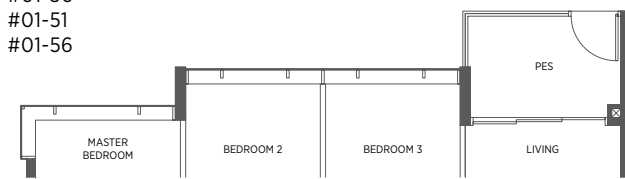
#18-30*
 #18-51
 #18-56

Incl. of 9 sq m | 97 sq ft of void area (high ceiling) above living



TYPE C2-P 85 sq m | 915 sq ft

#01-30*
 #01-51
 #01-56



3-Bedroom

TYPE C3 86 sq m | 926 sq ft
TYPE C3-R 98 sq m | 1055 sq ft
TYPE C3-R1 103 sq m | 1109 sq ft

#03-26 to #17-26*
 #02-34 to #17-34*
 #02-38 to #17-38*
 #02-43 to #17-43
 #02-47 to #17-47

#18-26*
 #18-38*
 #18-43

#18-34*
 #18-47

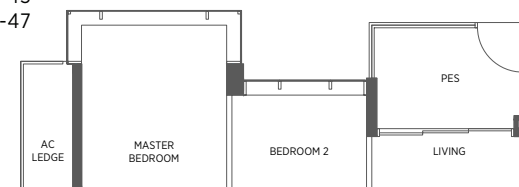
Incl. of 12 sq m | 129 sq ft of void area (high ceiling) above living

Incl. of 17 sq m | 183 sq ft of void area (high ceiling) above living & dining



TYPE C3-P 86 sq m | 926 sq ft

#01-34*
 #01-38*
 #01-43
 #01-47



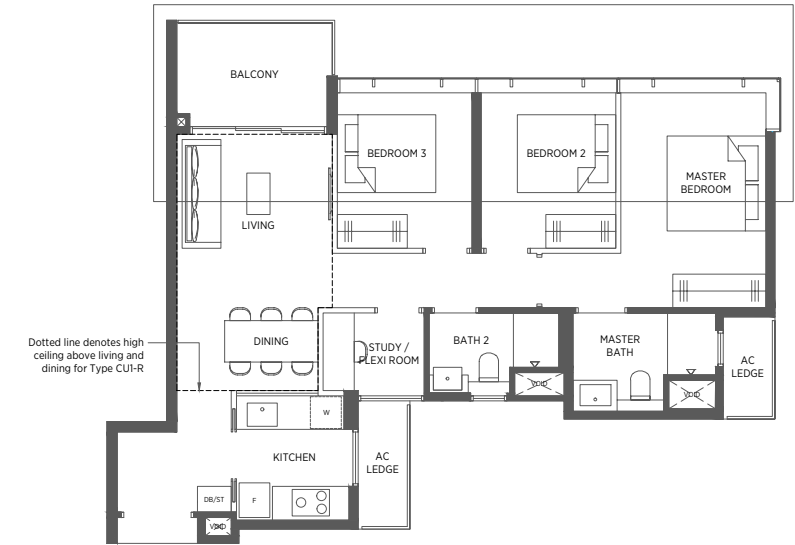
3-Bedroom + Study

TYPE CUI 89 sq m | 958 sq ft
TYPE CUI-R 104 sq m | 1119 sq ft

#02-08 to #17-08
 #02-17 to #17-17
 #02-55 to #17-55
 #02-68 to #17-68
 #02-73 to #17-73*

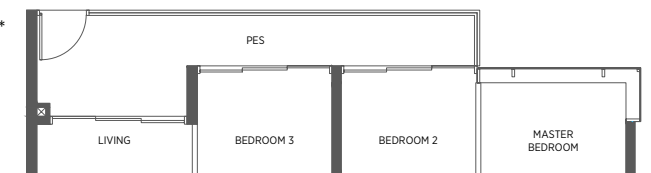
#18-08
 #18-17
 #18-55
 #18-68
 #18-73*

Incl. of 15 sq m | 161 sq ft of void area (high ceiling) above living & dining



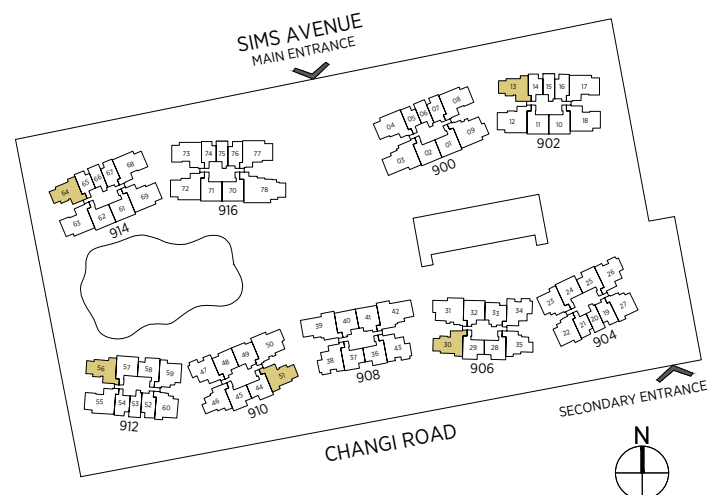
TYPE CUI-P 95 sq m | 1023 sq ft

#01-08
 #01-17
 #01-55
 #01-68
 #01-73*



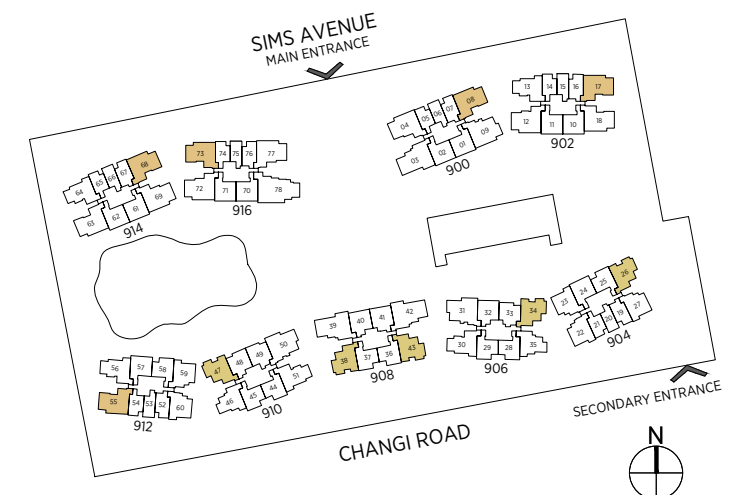
* Denotes mirror image

Area includes a/c ledge, balcony and void area (high ceiling). The plans are subject to change as may be required or approved by the relevant authorities. Areas are approximate measurements only and are subject to final survey. Plans are not drawn to scale and do not form part of the contract.



* Denotes mirror image

Area includes a/c ledge, balcony and void area (high ceiling). The plans are subject to change as may be required or approved by the relevant authorities. Areas are approximate measurements only and are subject to final survey. Plans are not drawn to scale and do not form part of the contract.



3-Bedroom + Study

TYPE CU2 TYPE CU2-R

93 sq m | 1001 sq ft 102 sq m | 1098 sq ft

#02-18 to #17-18*
#02-63 to #17-63

#18-18*
#18-63

Incl. of 9 sq m | 97 sq ft
of void area (high ceiling)
above living



3-Bedroom (Premium)

TYPE CP1 TYPE CP1-R

95 sq m | 1023 sq ft 112 sq m | 1206 sq ft

#02-04 to #17-04*
#02-77 to #17-77

#18-04*
#18-77

Incl. of 17 sq m | 183 sq ft
of void area (high ceiling)
above living & dining



3-Bedroom (Premium)

TYPE CP2 TYPE CP2-R

96 sq m | 1033 sq ft 107 sq m | 1152 sq ft

#02-12 to #17-12*
#02-69 to #17-69
#02-72 to #17-72*

#18-12*
#18-69
#18-72*

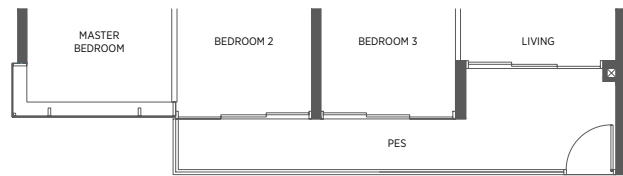
Incl. of 11 sq m | 118 sq ft
of void area (high ceiling)
above living



TYPE CU2-P

96 sq m | 1033 sq ft

#01-18*
#01-63



TYPE CP1-P

98 sq m | 1055 sq ft

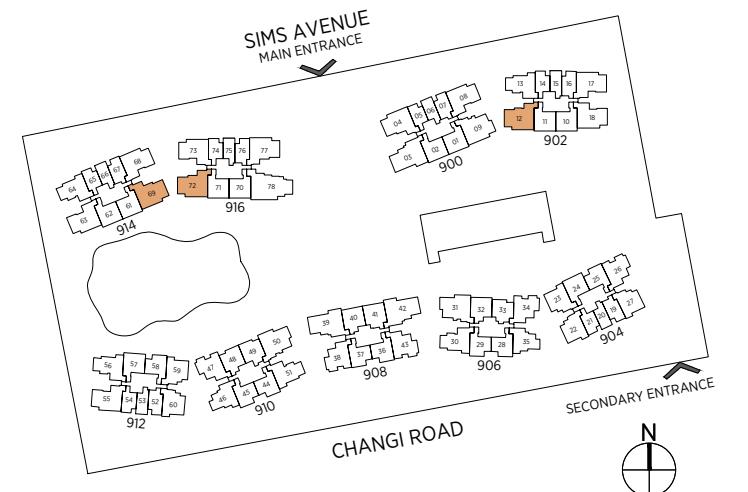
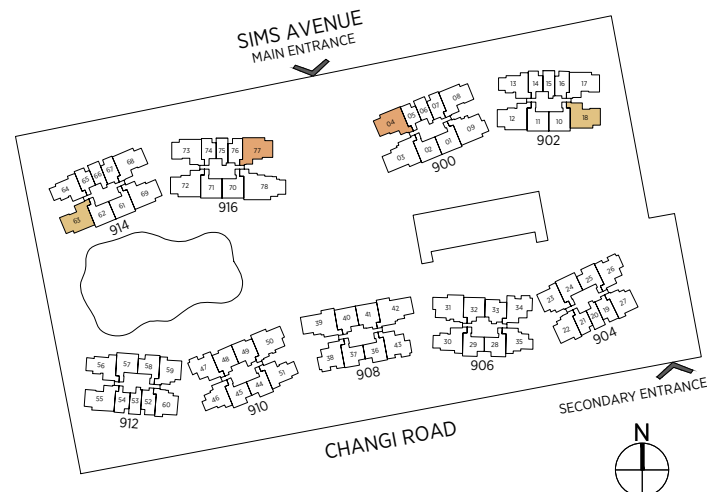
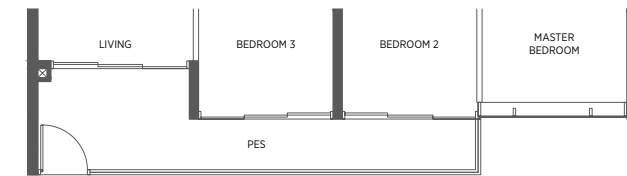
#01-04*
#01-77



TYPE CP2-P

99 sq m | 1066 sq ft

#01-12*
#01-69
#01-72*



* Denotes mirror image

Area includes a/c ledge, balcony and void area (high ceiling). The plans are subject to change as may be required or approved by the relevant authorities. Areas are approximate measurements only and are subject to final survey. Plans are not drawn to scale and do not form part of the contract.

* Denotes mirror image

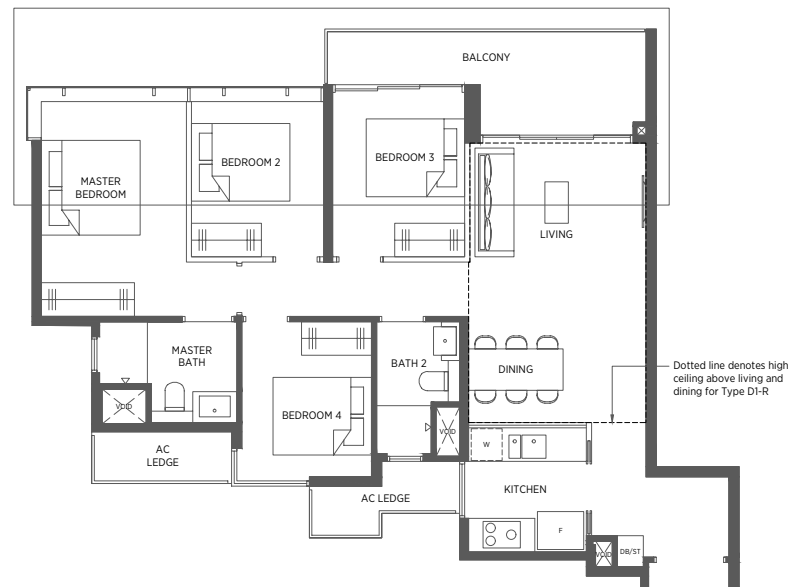
Area includes a/c ledge, balcony and void area (high ceiling). The plans are subject to change as may be required or approved by the relevant authorities. Areas are approximate measurements only and are subject to final survey. Plans are not drawn to scale and do not form part of the contract.

4-Bedroom

TYPE D1 104 sq m | 1119 sq ft
TYPE D1-R 124 sq m | 1335 sq ft

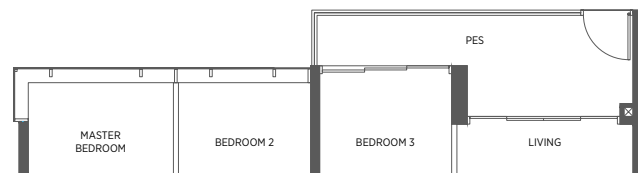
#02-31 to #17-31
 #02-50 to #17-50*
 #18-31
 #18-50*

Incl. of 20 sq m | 215 sq ft
 of void area (high ceiling)
 above living & dining



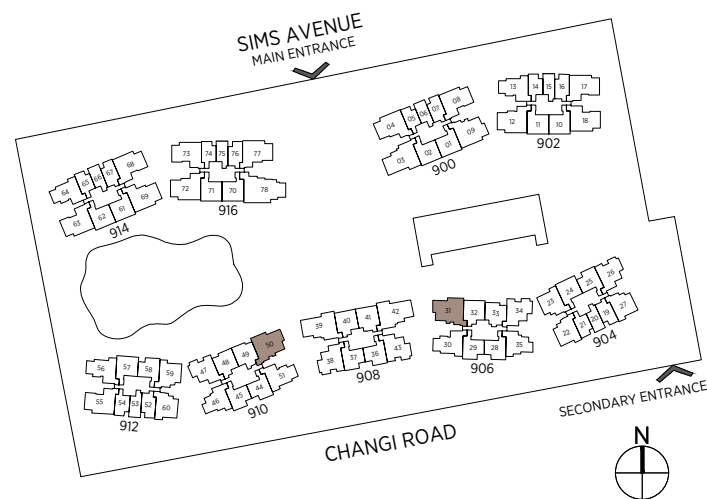
TYPE D1-P
 104 sq m | 1119 sq ft

#01-31
 #01-50*



* Denotes mirror image

Area includes a/c ledge, balcony and void area (high ceiling). The plans are subject to change as may be required or approved by the relevant authorities. Areas are approximate measurements only and are subject to final survey. Plans are not drawn to scale and do not form part of the contract.

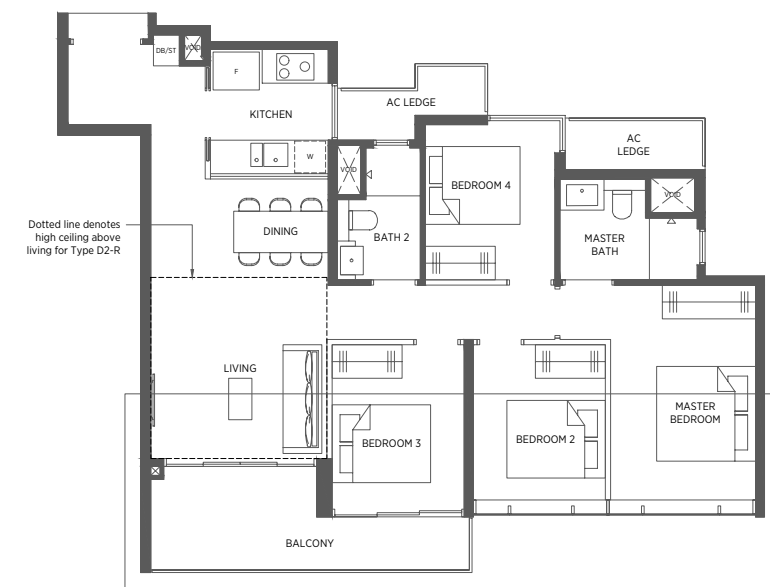


4-Bedroom

TYPE D2 104 sq m | 1119 sq ft
TYPE D2-R 117 sq m | 1259 sq ft

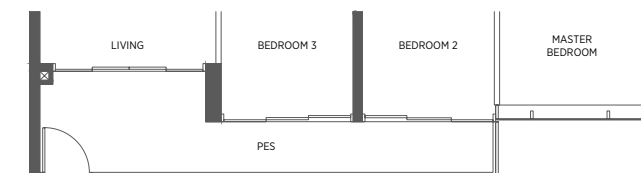
#02-09 to #17-09
 #18-09

Incl. of 13 sq m | 140 sq ft
 of void area (high ceiling)
 above living

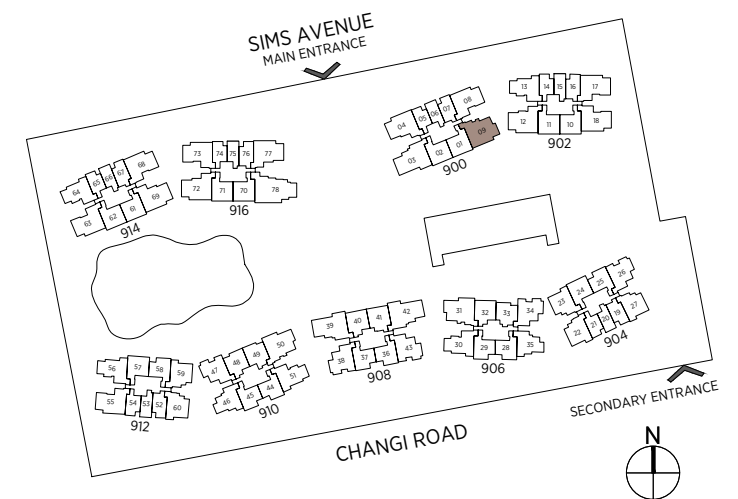


TYPE D2-P
 107 sq m | 1152 sq ft

#01-09



Area includes a/c ledge, balcony and void area (high ceiling). The plans are subject to change as may be required or approved by the relevant authorities. Areas are approximate measurements only and are subject to final survey. Plans are not drawn to scale and do not form part of the contract.



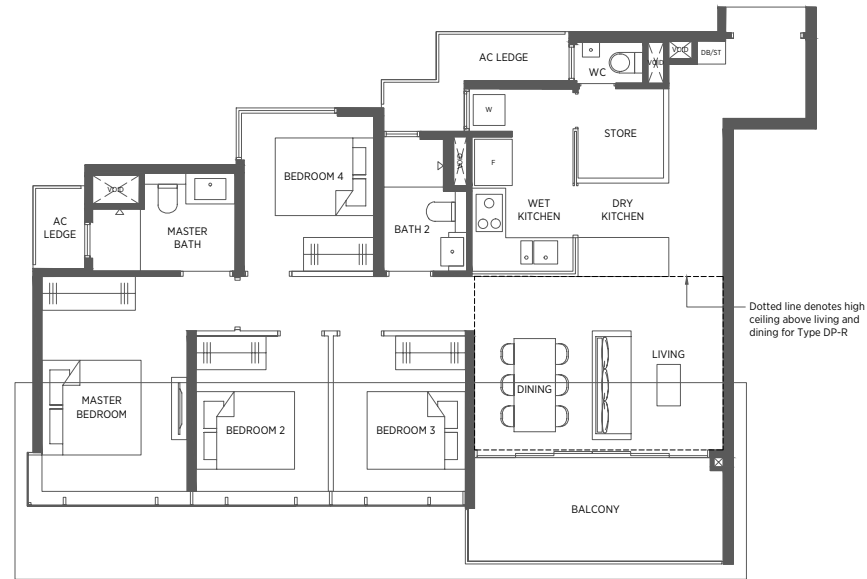
4-Bedroom (Premium)

TYPE DP TYPE DP-R

114 sq m | 1227 sq ft 131 sq m | 1410 sq ft

#02-03 to #17-03 #18-03
 #02-39 to #17-39* #18-39*
 #02-42 to #17-42 #18-42

Incl. of 17 sq m | 183 sq ft of void area (high ceiling) above living & dining



TYPE DP-P

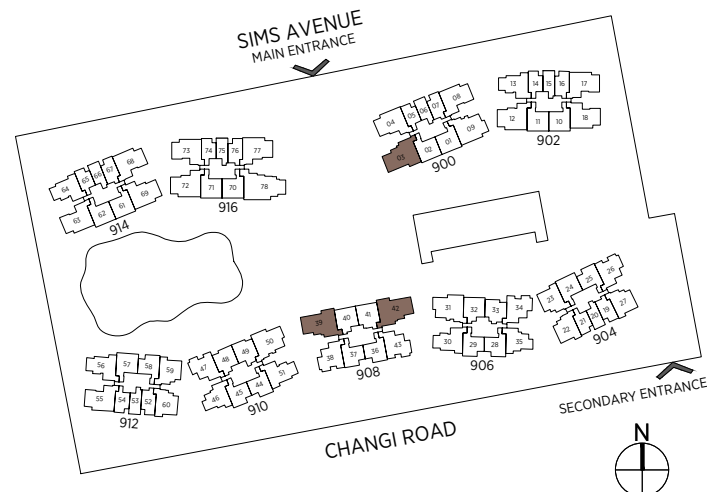
114 sq m | 1227 sq ft

#01-03
 #01-39*
 #01-42



* Denotes mirror image

Area includes a/c ledge, balcony and void area (high ceiling). The plans are subject to change as may be required or approved by the relevant authorities. Areas are approximate measurements only and are subject to final survey. Plans are not drawn to scale and do not form part of the contract.



5-Bedroom

TYPE E TYPE E-R

130 sq m | 1399 sq ft 149 sq m | 1604 sq ft

#02-78 to #17-78 #18-78

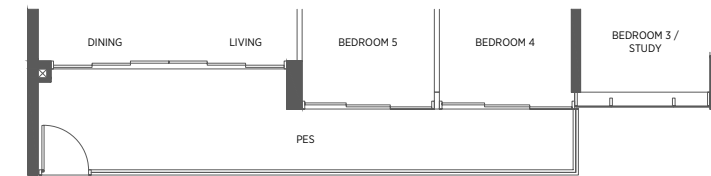
Incl. of 19 sq m | 205 sq ft of void area (high ceiling) above living & dining



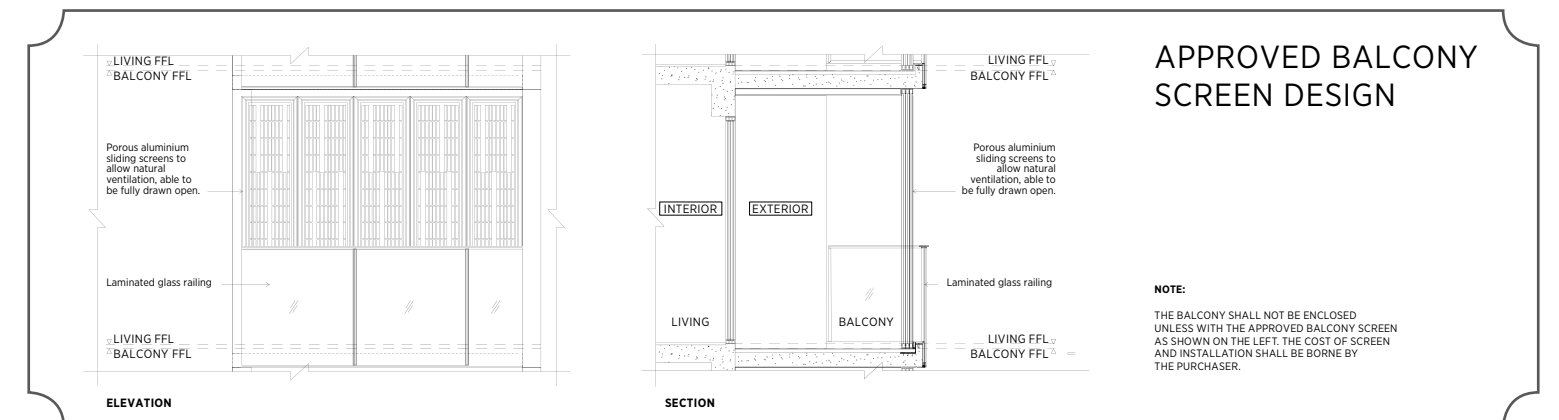
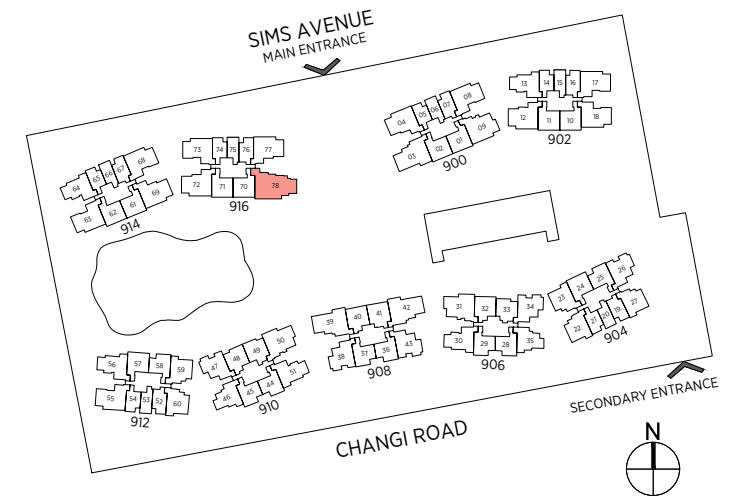
TYPE E-P

137 sq m | 1475 sq ft

#01-78

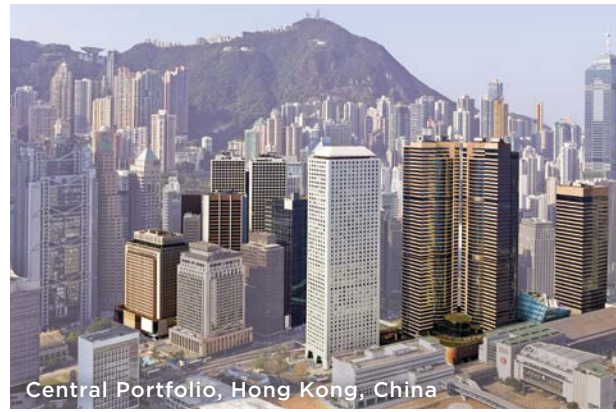


Area includes a/c ledge, balcony and void area (high ceiling). The plans are subject to change as may be required or approved by the relevant authorities. Areas are approximate measurements only and are subject to final survey. Plans are not drawn to scale and do not form part of the contract.





Marina Bay Financial Centre
Singapore



Central Portfolio, Hong Kong, China



The ESSE Sukhumvit 36
Bangkok, Thailand



LakeVille



J Gateway



Lake Grande



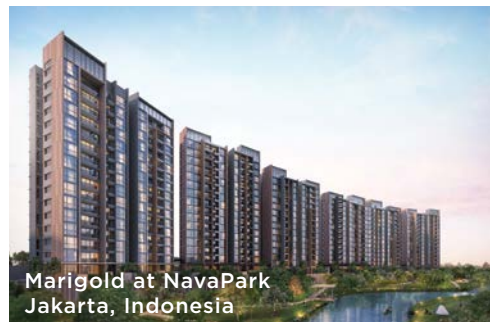
World Trade Centre
Jakarta, Indonesia



Parkville, Shanghai, China



Ripple Bay



Marigold at NavaPark
Jakarta, Indonesia



WF CENTRAL, Beijing, China



The Nassim
Ho Chi Minh, Vietnam



Terrasse



Margaret Ville



Bamboo Grove, Chongqing, China

Hongkong Land

Hongkong Land is a leading property investment, management and development group. The Group owns and manages more than 850,000 sq. m. of prime office and luxury retail property in key Asian cities, principally in Hong Kong, Singapore and Beijing. The Group also has a number of high quality residential, commercial, and mixed-use projects under development in cities across Greater China and Southeast Asia. In Singapore, its subsidiary, MCL Land, is a well-established residential developer. Hongkong Land Holdings Limited is incorporated in Bermuda and has a standard listing on the London Stock Exchange, with secondary listings in Bermuda and Singapore. The Group's assets and investments are managed from Hong Kong by Hongkong Land Limited. Hongkong Land is a member of the Jardine Matheson Group.



Ahandamaya Residences
Jakarta, Indonesia



UBER 388



Hallmark Residences

MCL Land

 A Hongkong Land company

MCL Land has established a legacy of building quality homes in both Singapore and Malaysia over the last 50 years. It is a member of the Jardine Matheson Group under Hongkong Land Holdings. The Group has an extensive portfolio of prime residential properties in Singapore and Malaysia.

Notable developments include The Estuary, UBER 388, Este Villa, Terrasse, Palms @ Sixth Avenue, Hallmark Residences, Ripple Bay, J Gateway, LakeVille, Sol Acres, Lake Grande and Margaret Ville.

As a premier and reputable property group, we are dedicated to delivering superior customer satisfaction and shareholder value growth.

Parc Esta is our latest development that encapsulates our commitment to provide quality homes which surpass the expectations of satisfied buyers.

MCL Land



A Hongkong Land company

Developer: MCL Land (Everbright) Pte Ltd • Company Registration No.: 201700249G • Developer Licence: C1288 • Encumbrances: Mortgage No. IF/156957P in favour of DBS Bank Ltd. • Lot No.: 04132L MK 23 at Sims Avenue • Land Tenure: 99 years commencing from 12 July 2018 • Expected Date of Vacant Possession: 31 December 2022 • Expected Date of Legal Completion: 31 December 2025.

While every reasonable care has been taken in preparing this brochure and in constructing the models and showflats, neither the Developer nor its agents will be held responsible for any inaccuracies or omissions. Visual representations, models, showflat displays and illustrations, photographs, art renderings and other graphic representations and references are intended to portray only artistic impressions of the development and décor and cannot be regarded as representations of fact. All areas and other measurements are approximate measurements and are subject to final survey. The development is subject to final inspection by the relevant authorities to comply with the current codes of practice. All information, specifications, renderings, visual representations and plans are current at the time of publication and are subject to change as may be required by the Developer and/or the relevant authorities. All statements are believed to be correct but shall not be regarded as statements or representations of fact. All plans and models are not to scale unless expressly stated and are subject to any amendments which are required or approved by the relevant authorities. The Sale and Purchase Agreement shall form the entire agreement between the Developer and the Purchaser and shall supersede all statements, representations or promises made prior to the signing of the Sale and Purchase Agreement and shall in no way be modified by any statements, representations or promises made by the Developer or its agents, which are not embodied in the Sale and Purchase Agreement.